



Illustrated Parts Catalogue



UL350iHPS
AERO ENGINE

Please fill in your engine and aircraft details for further reference:

Engine Serial No. :

Aircraft type :

Model :

Serial No. :

Registration :

Introduction

Remarks

The illustrations in this Illustrated Parts Catalogue show the typical construction. They may not represent in full detail or the exact shape of the parts which have the same or similar function.

Modifications

All efforts are made to ensure the accuracy of this Illustrated Parts Catalogue at the time of publication. ULPower, however, maintains a policy of continuous improvement of its products without imposing upon itself any obligation to install them on its products previously manufactured.

ULPower reserves the right at any time to discontinue or change specifications, designs, features, models or equipment without incurring obligation.

Engine serial number

On all enquiries or spare parts orders, always indicate the engine serial number, as the manufacturer makes modifications to the engine for further development.

The engine serial number is located at the front left side of the crankcase (above oil filter).

Structure

Each section of this Illustrated Parts Catalogue starts with an exploded view or assembly drawing on the left side. The corresponding heading and the listing of the parts is on the right side and the following pages.

For each assembly drawing the right number of parts is listed in the relevant column. Because an engine can contain multiple times the illustrated assembly or a part can be used in several different applications, the total number of parts per engine is also given.

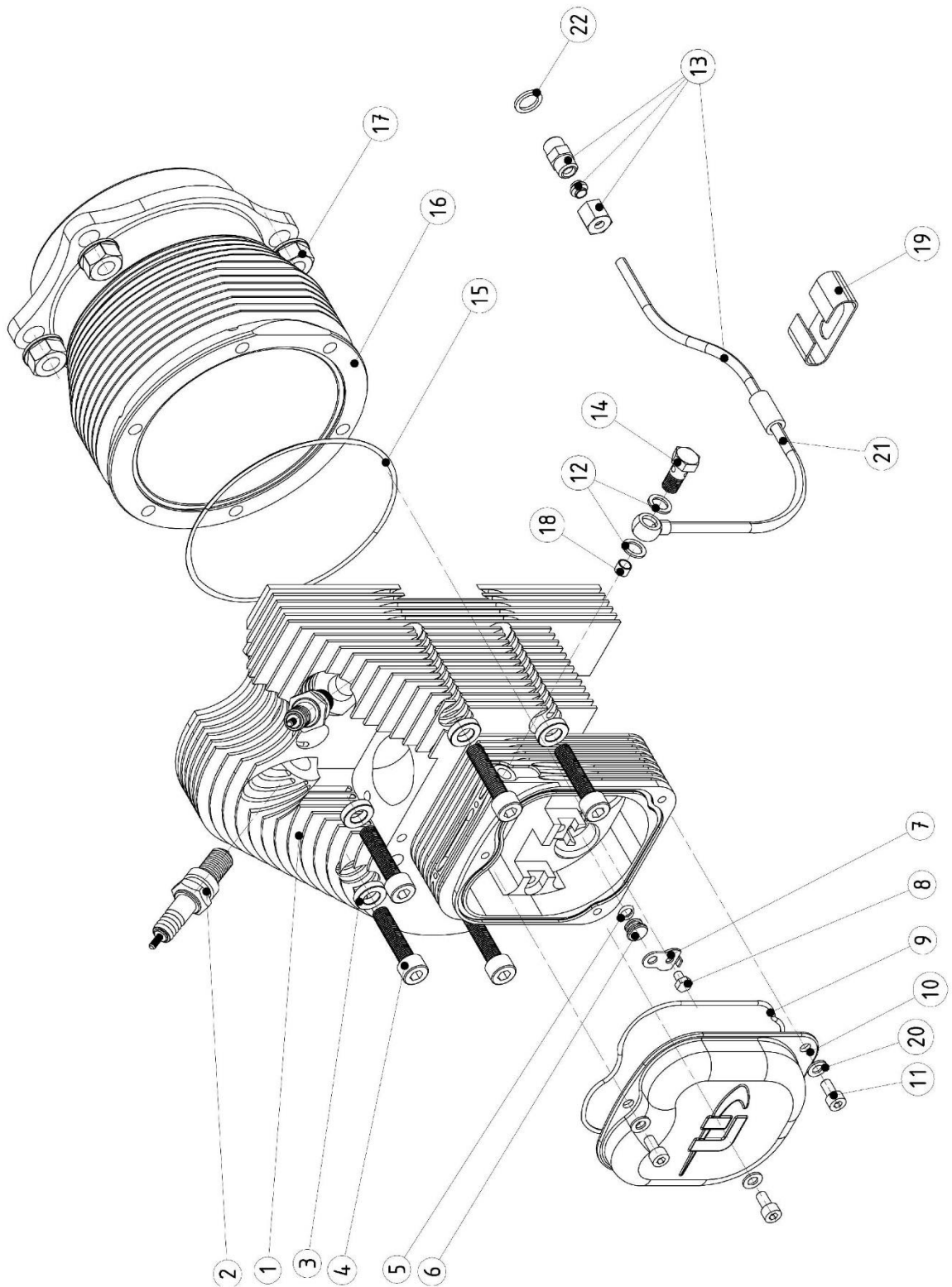
Generally all fasteners are tightened with a torque wrench. The "Notes" column indicates the appropriate torque or refers to extra information at the end of the section.

Blank

Table of Contents

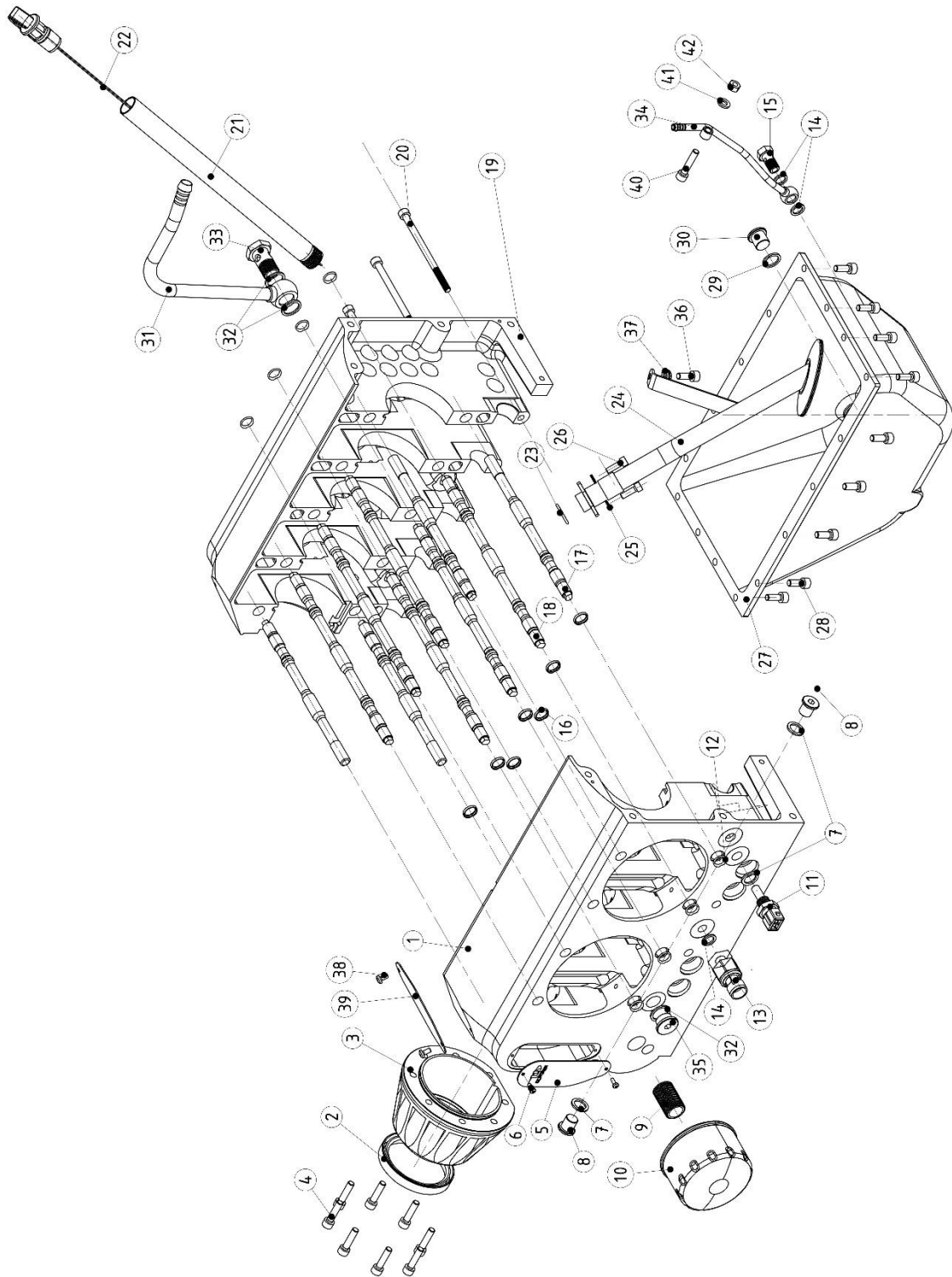
Inhoud

Introduction	1
Remarks	1
Modifications	1
Engine serial number	1
Structure	1
Table of Contents	3
Cylinder Head and Cylinder	5
Crankcase, Oil Sump and Dipstick	7
Oil Pump Assembly: BE040515	9
Camshaft and Valve Train	11
Crankshaft, Conrod and Piston	13
Inlet Manifold, Injectors and Throttle (Single ECU)	15
Inlet Manifold, Injectors and Throttle (Double ECU)	19
Fuel lines	23
Engine Mount Plate, Starter and Alternator	25
Exhaust System	29
Breather and Oil/Air Separator	31
Oil Thermostat : E042515	33
Ignition and Engine Control Unit	35
Accessories	37
Section of drawings	38
Notes	39
Revision	40



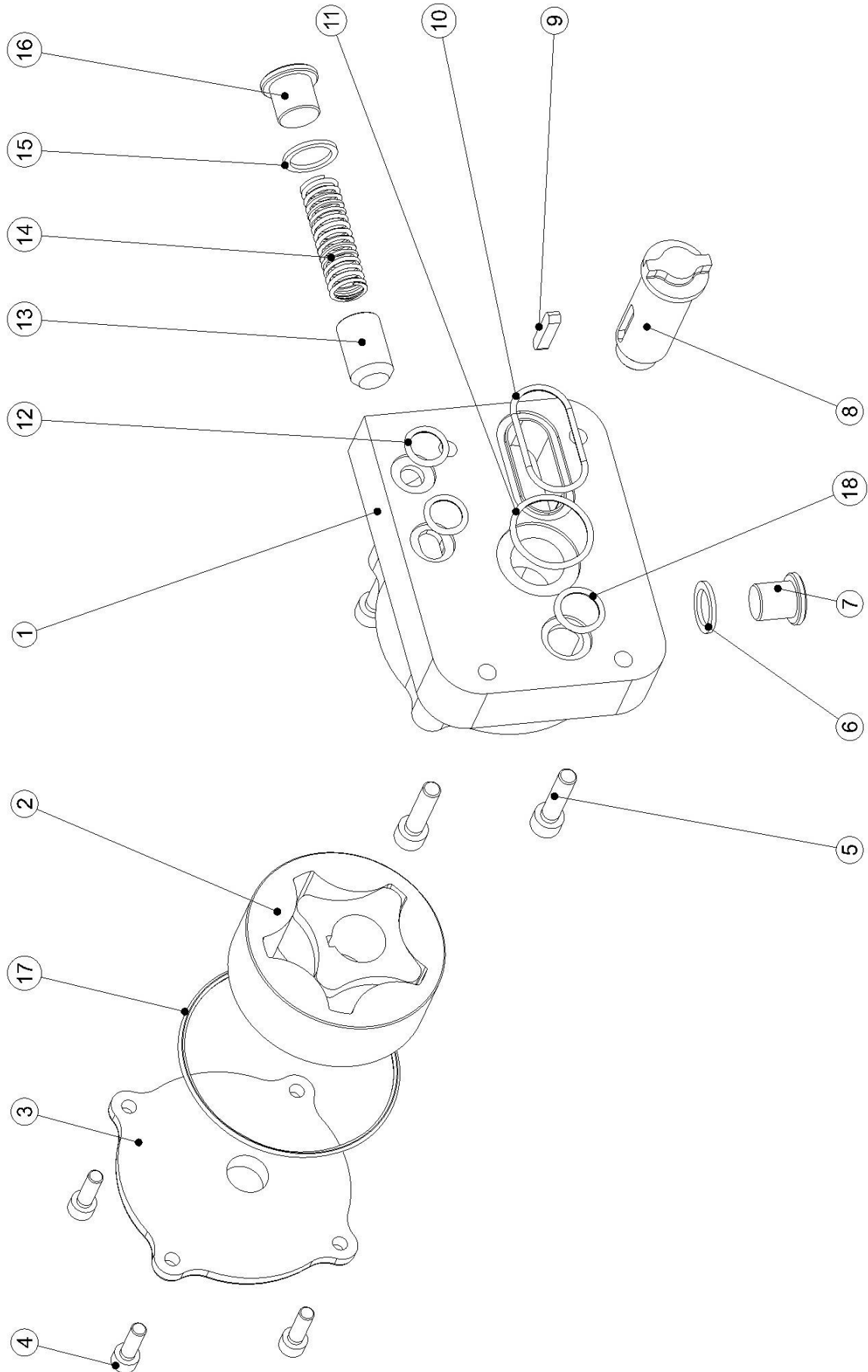
Cylinder Head and Cylinder

Item	Part No.	Description	Parts in assembly	Note
1		Cylinder Head Assembly	1	
	BE012512	Cylinder Head Right	0	
	BE012513	Cylinder Head Left	1	
	E035001	Valve Guide	2	
	E034501	Exhaust Valve Seat	1	
	E034502	Inlet Valve Seat	1	
2	E070502	Spark Plug	2	21 Nm (1)
3	E012504	Cylinder Head Washer	6	
4	F0408035	Socket Cap Screw - M8x1x35 - 12.9 Steel	6	36 Nm (1)
5	S1006015	O-Ring Viton 6x1.5	1	
6	E012505	Cylinder Head Plug	1	
7	E012503	Locking plate M4 bolt	1	
8	F1004006	Hexagon head screw M4x6 - 8.8 Steel - Zinc Plated	1	1.5 Nm
9	S1100020	O-Ring Viton 99x2	1	
10	E012506	Valve Cover	1	
11	F0105016	Socket Cap Screw - M5x16 - 8.8 Steel - Yellow Passivated	3	6 Nm
12	S3081210	Copper Sealing Ring ø8x12x1	2	
13	BE041505	Cylinder Head Oil Line Left Assembly	1	6 Nm
	BE041506	Cylinder Head Oil Line Right Assembly	0	
14	F2520800	Banjo Bolt M8x1	1	8 Nm
15	E013001	Cylinder Gasket	1	(4)
16	BE012004	Cylinder	1	(5)
17	E011003	Flanged Nut M10x1	4	36 Nm
18	E012511	Cylinder Head Oil Filter	1	
19	E012530	Bracket oil line	1	
20	F2110050	Nordlock washer M5	3	
21	F2550013	Cloth braided hose Ø5,5 x Ø10,5	1	
22	S3101415	Copper ring Ø10x14x15	1	



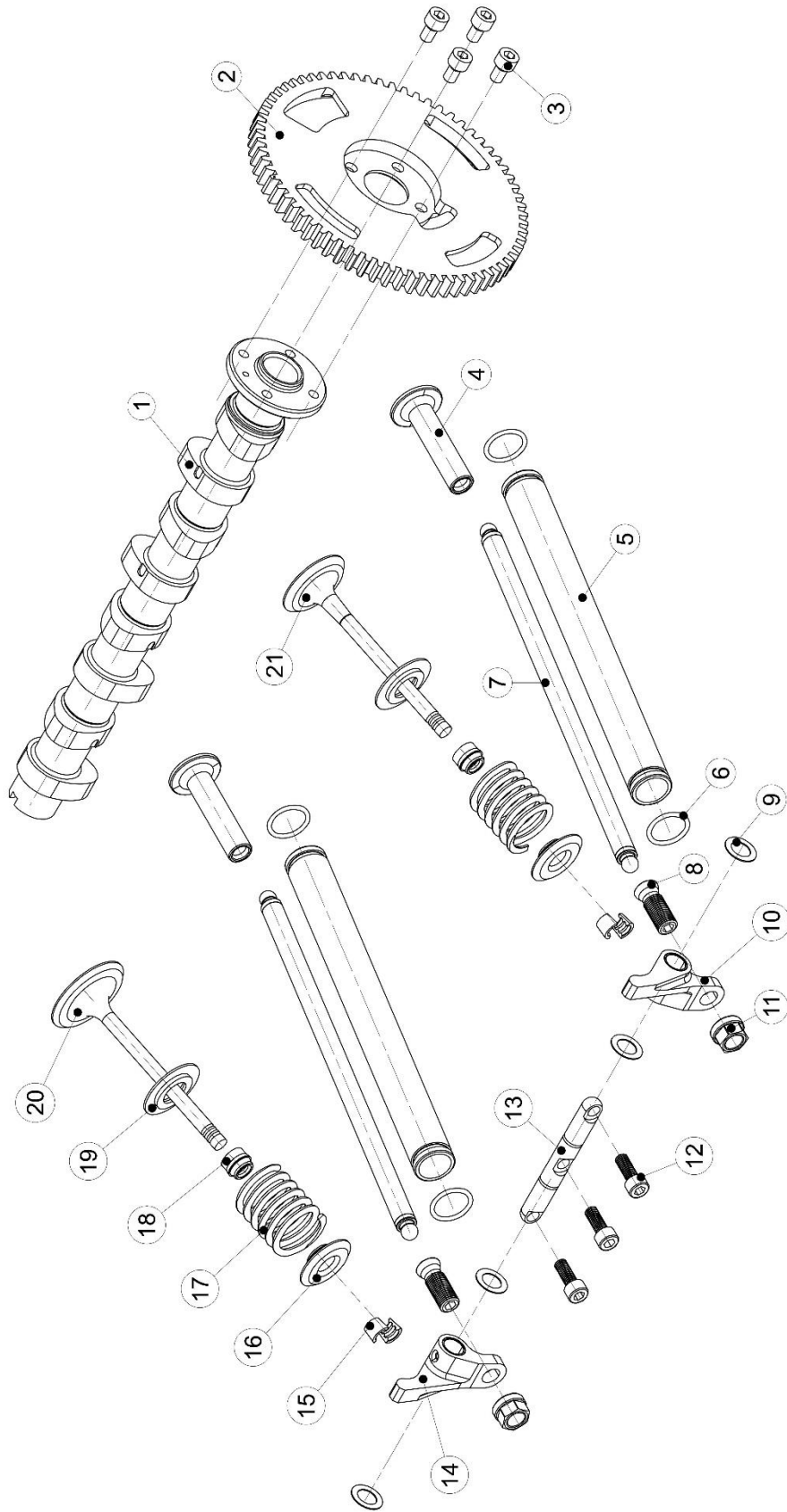
Crankcase, Oil Sump and Dipstick

Item	Part No.	Description	Parts in assembly	Note
1	BE010502	Crankcase Left	1	(7)
2	S2607510	Oil Seal Viton 60x75x10 GR	1	(5)
3	BE010509	Thrust Bearing Mount	1	(7)
4	F0106025	Socket Cap Screw - M6x25 - 8.8 Steel - Yellow Passivated	8	10 Nm
5	E010508	Engine Model Number Plate	1	
6	F3503008	Button Head Socket Cap Screw - M3x8 - 10.9 Steel - Zinc Plated	2	1.5 Nm
7	S3121715	Copper Sealing Ring \varnothing 12x17x1.5	3	
8	F4621215	Hexagon Socket Screw Plug - M12x1.5	2	25 Nm (2)
9	E042006	Oil Filter Screw M20x1.5	1	
10	E042010	Oil Filter	1	15 Nm (3)
11	E081516	Oil Temperature Sensor	1	20 Nm
12	S1011015	O-Ring Viton \varnothing 11x1.5	8	
13	E081507	Oil pressure sensor	1	12 Nm
14	S3101415	Copper Sealing Ring \varnothing 10x14x1.5	3	
15	F2521000	Banjo Bolt M10x1 L =25	1	10 Nm
16	S1012020	O-Ring Viton \varnothing 12x2	7	(3)
17	E011002	Stud Short	4	(1)
18	E011001	Stud Long	6	
19	BE010501	Crankcase Right	1	
20	F0206100	Socket Cap Screw - M6x100 - 8.8 Steel - Zinc Plated	4	10 Nm
21	E043003	Dipstick Tube	1	(6)
22	E043004	Dipstick	1	
23	S1018010	O-Ring Viton \varnothing 18x1	1	
24	BE044501	Oil Pickup Tube with Filter	1	
25	F2110050	NordLock Washer M5	2	
26	F0105016	Socket Cap Screw - M5x16 - 8.8 Steel - Yellow Passivated	2	6 Nm
27	E041002F	Oil Sump	1	(7)
28	F0106016	Socket Cap Screw - M6x16 - 8.8 Steel - Yellow Passivated	16	10 Nm
29	S3142015	Copper Sealing Ring \varnothing 14x20x1.5	1	
30	E041020	Carter plug magnet M14x1,5	1	25 Nm
31	E043510	Oil breather tube	1	
32	S3162215	Copper sealing ring \varnothing 16x22x1.5	3	
33	F2521615	Banjo bolt M16x1.5	1	25Nm
34	E043511	Oil return tube sump	1	
35	E041015	Plug 5/8 -18UNF	1	
36	F0106016	Socket cap screw M6x16 - 8.8 Steel - Yellow Passivated	1	10 Nm
37	F2110060	Nordlock Washer M6	1	
38	F0904008	Hex socket button head cap screw M4x8 - 10.9 Zn	2	
39	M900016	Logoplaatje	1	
40	F0206028	Socket Cap Screw M6x28 - 8,8 Zn	1	
41	F2110060	Nordlock Washer M6	1	
42	F5001060	Hexagon Nut M6 - Zn	1	



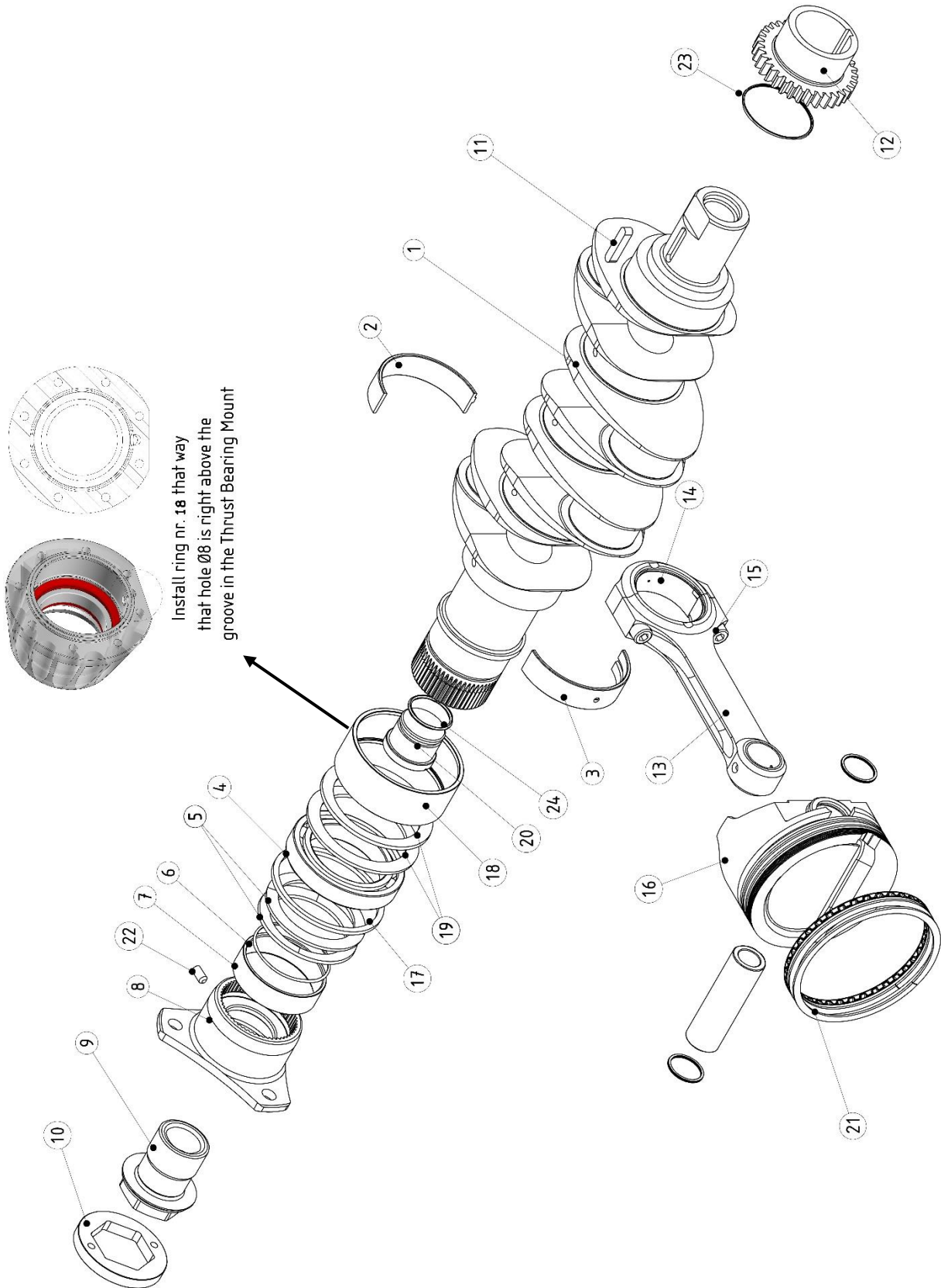
Oil Pump Assembly: BE040515

Item	Part No.	Description	Parts in assembly	Note
1	BE040510	Oil Pump Housing	1	(7)
2	BE040514	Oil Pump Rotor Set	1	
3	E040509	Oil Pump Cover	1	
4	F0105016	Socket Cap Screw - M5x16 - 8.8 Steel - Yellow Passivated	4	6 Nm
5	F0106025	Socket Cap Screw - M6x25 - 8.8 Steel - Yellow Passivated	4	10 Nm
6	S3121715	Copper Sealing Ring $\varnothing 12 \times 17 \times 1.5$	1	
7	F4621215	Hexagon Socket Screw Plug - M12x1.5	1	25 Nm
8	BE040513	Oil Pump Shaft	1	
9	F1704020	Parallel Key 4x4x20	1	
10	S1030020	O-Ring Viton $\varnothing 30 \times 2$	1	
11	S1024020	O-Ring Viton $\varnothing 24 \times 2$	1	
12	S1011020	O-Ring Viton $\varnothing 11 \times 2$	2	
13	BE040516	Plunjer oil pump B25	1	
14	E040506	Pressure Relief Spring	1	
15	S3162015	Copper Sealing Ring $\varnothing 16 \times 20 \times 1.5$	1	
16	F4621615	Hexagon Socket Screw Plug - M16x1.5	1	25 Nm
17	S1070020	O-ring Viton 70x2	1	
18	S1013020	O-ring Viton 13x2	1	



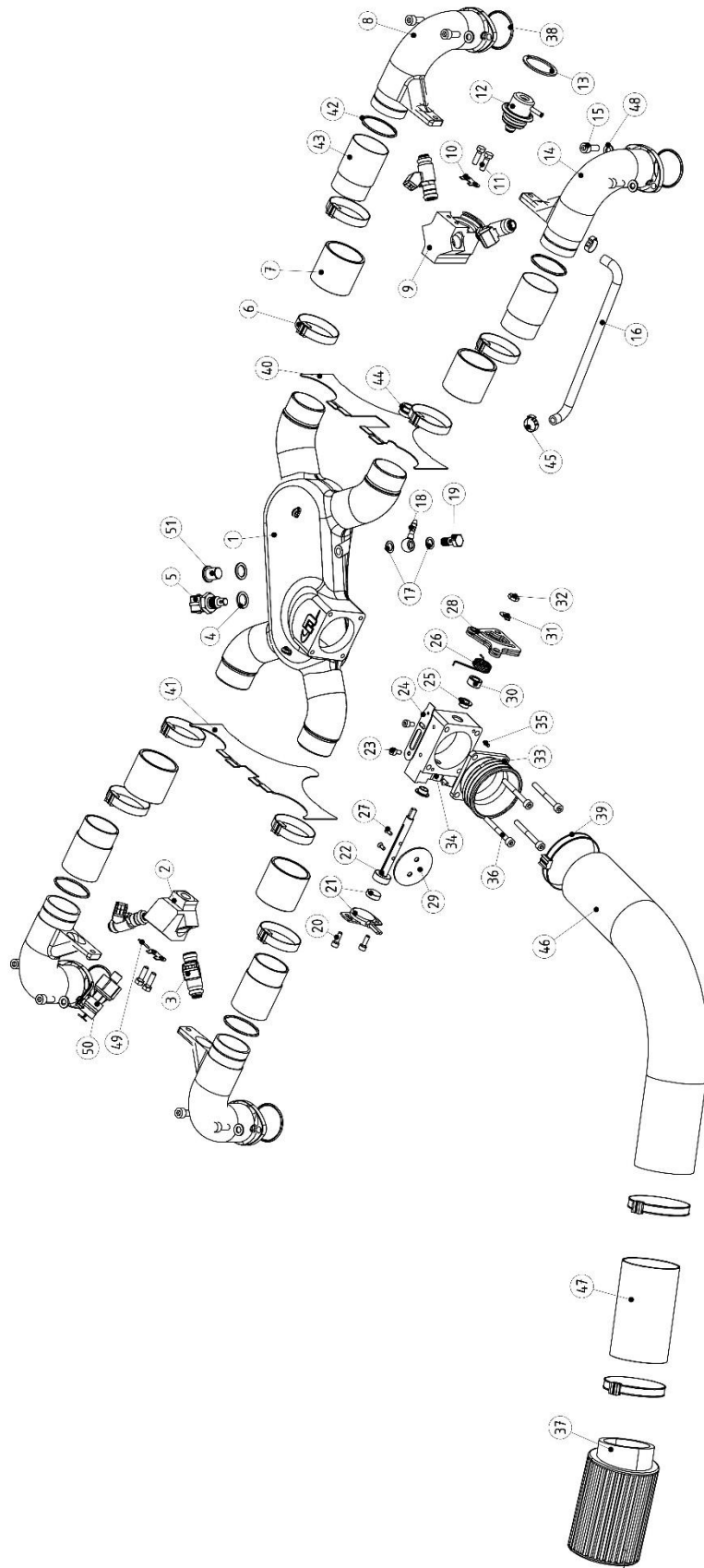
Camshaft and Valve Train

Item	Part No.	Description	Parts in assembly	Note
1	E030503	camshaft 110° 3.5HPS	1	
2	E031001	Camshaft Gear	1	
3	F0306010	Socket Cap Screw - M6x10 - 12.9 Steel	4	18 Nm (2)
4	E031501	Cam Follower	2	
5	BE041501	Oil Return Tube	2	
6	S1017020	O-Ring Viton ø17x2	4	(3)
7	BE032005	Push Rod	2	
8	E032505	Tappet Adjusting Screw	2	
9	F2311016	Shim Ring 0.5mm - ø10x16	4	
10	E032506	Rocker Tappet Right	1	
11	E011003	Flanged Nut M10x1	2	20 Nm
12	F0306016	Socket Cap Screw - M6x16 - 12.9 Steel	3	12 Nm (2)
13	E032504	Rocker Shaft	1	
14	E032507	Rocker Tappet Left	1	
15	E034003	Collet Valve Spring Lock	4	
16	E034002	Valve Spring Retainer Top	2	
17	E033501	Valve Spring	2	
18	E035501	Valve Stem Seal	2	
19	E034001	Valve Spring Retainer Bottom	2	
20	E033002	Inlet Valve	1	
21	E033001	Exhaust Valve	1	



Crankshaft, Conrod and Piston

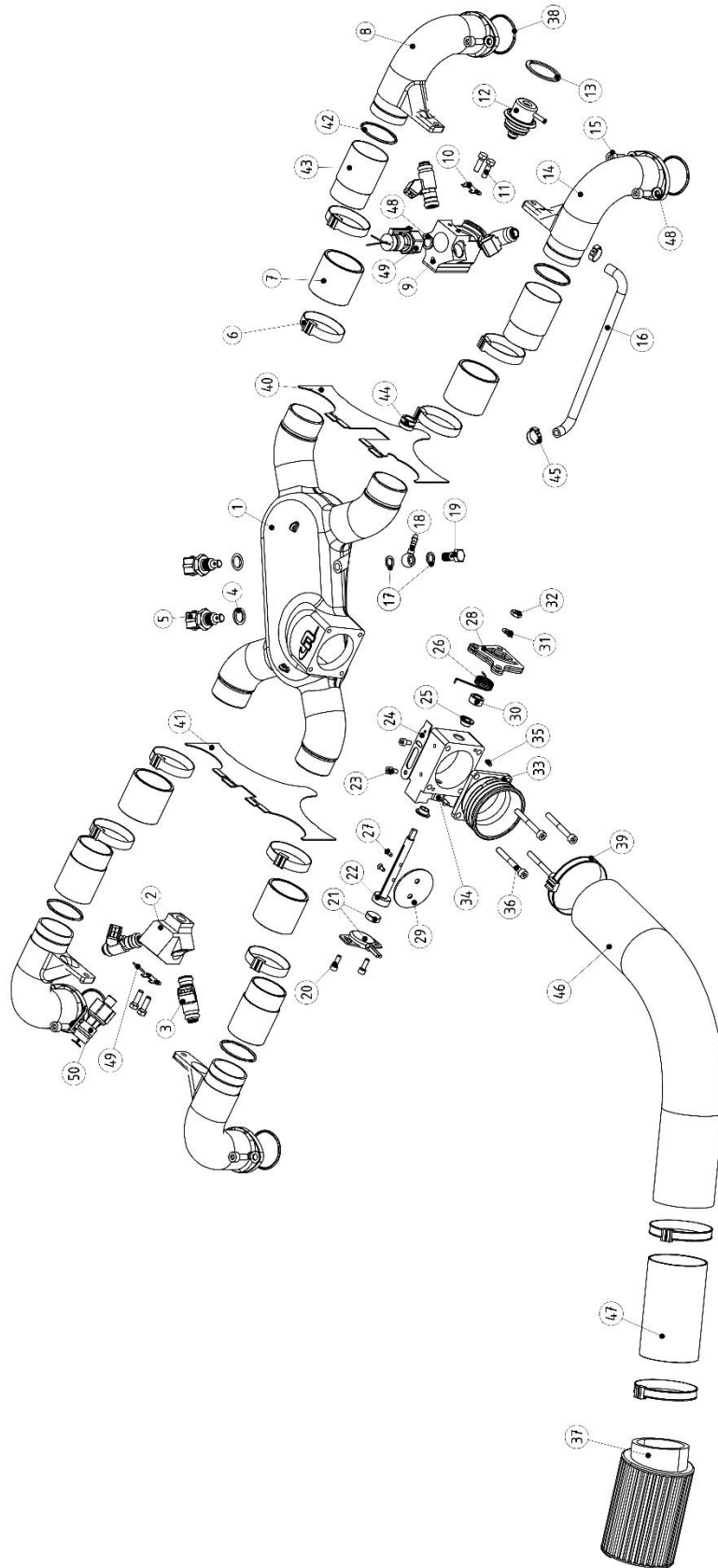
Item	Part No.	Description	Parts in assembly	Note
1	BE020502	Crankshaft	1	
2	BE022005	Crankshaft Bearing Set (contains piece 2, 3)	5	
3		Crankshaft Bearing Half 1		
3		Crankshaft Bearing Half 1		
4	E022001	Thrust Bearing	1	
5	E021502	Thrust Bearing Disc Spring	2	
6	S1052020	O-Ring Viton ø50x1.78	1	
7	E021504	Thrust Bearing Retention Ring	1	
8	E022507	Gearbox Flange	1	
9	E023001	Prop Flange Bolt	1	300Nm (1)
10	E022511	Locking gearbox flange bolt	1	
11	F1706030	Parallel Key 6x6x30	1	
12	E021001	Crankshaft Gear	1	
13	BE023506	Connecting Rod Assembly	4	
14	E022004	Connecting rod bearing set (2)	4	
15	F0408035	Socket Cap Screw - M8x1x35 - 12.9 Steel	8	36 Nm (2+4)
16	E024009 E024008	Piston -18cc ("I" engines) Piston -7cc ("iS" engines)	1	
17	E021506	Thrust Bearing Disc	1	
18	E021515	Thrust Bearing Retention Ring Outer	1	
19	E021510	Thrust Bearing Disc Spring Outer	2	
20	E020512	Oil Stop Crankshaft Front	1	(9)
21	E024010	Piston ring set	4	
22	F1306012	hexagon socket set screw M6x12	1	10 Nm
23	S1047017	O-ring Viton 47.35 x1.78	1	
24	S1028020	O-ring Viton Ø28x2	1	



Inlet Manifold, Injectors and Throttle (Single ECU)

Item	Part No.	Description	Parts in assembly	Note
1	BE061510	Inlet Collector HPS	1	
2	E061506	Injector Holder	1	
3	SE062501	Injector 330 cc	4	(3)
4	S3121715	Copper Sealing Ring $\varnothing 12 \times 17 \times 1.5$	1	
5	E081504	Air Temperature Sensor	1	20 Nm
6	F2580001	Hose Clamp single use $\varnothing 47$	8	
7	E061511	Rubber Hose 38x3x38	4	
8	E061509	Inlet Tube Right	2	(7)
9	E061513	Injector + Fuel Pressure Regulator Holder / Bypass (Single ECU)	1	
10	E061512	Injector Holder Lock Plate	2	
11	F1005016	Hex Head Screw - M5x16 - 8.8 Steel - Yellow Passivated	4	6 Nm
12	E064501	Fuel Pressure Regulator - 3bar	1	(3)
13	F1600036	Retaining Ring - bore 36mm	1	
14	E061508	Inlet Tube Left	2	
15	F0106016	Socket Cap Screw - M6x16 - 8.8 Steel - Yellow Passivated	8	10 Nm (2)
16	E064503	Fuel Pressure Regulator Hose ($\varnothing 4.5 \times 9.5 \times 16$ cm)	1	
17	S3081210	Copper Sealing Ring $\varnothing 8 \times 12 \times 1$	2	
18	F2510708	Banjo Eye M8/ $\varnothing 5$	1	
19	F2520800	Banjo Bolt M8x1	1	6 Nm
20	SUSE060521	Throttle assy dia 45 (Contains piece 20 - 33)	2	
21	F3604010	Flanged Button Head Socket Cap Screw - M4x10 - Zinc Plated	2	
22	E081519	Double TPS Hall	1	
23	SE060530	Throttle shaft D45 Hall Sensor	1	
24	F0104008	Socket Cap Screw - M4x8 - 8.8 Steel - Yellow Passivated	2	2Nm
25	E060506	Throttle Lever Stop	2	
26	B2200001	Flanged Bushing 8x10x5.5	1	
27	E060511	Throttle lever spring	2	
28	F3504008	Button head socket cap screw - M4x8 - 10.9 Steel - Zinc Plated	1	
28	E060543	Throttle lever out plate hall sensor	2	3Nm
28	E060544	Lever middle plate hall Sensor	1	
28	E060545	Lever inner plate hall sensor	1	
29	SE060525	Throttle Plate D45	1	
30	E060542	throttle bushing hall sensor	1	
31	SE061513	Locking plate throttle shaft	1	
32	F5001060	Hex nut M6 -Zn	1	
33	SE060535	Throttle connection	1	
34	SE060520	Throttle Housing D45 Hall Sensor	1	(7)
35	F1803006	Parallel Pin 3x6	2	
36	F0105035	Socket Cap Screw - M5x35 - 8.8 Steel - Yellow Passivated	4	6 Nm
37	SE062003	Air Filter D60 straight	1	
38	S1036020	O - Ring Viton 36 x 2	4	
39	F2580005	Hose clamp single use $\varnothing 63,5$	3	
40	E012510	Baffle right	1	
41	E012509	Baffle left	1	

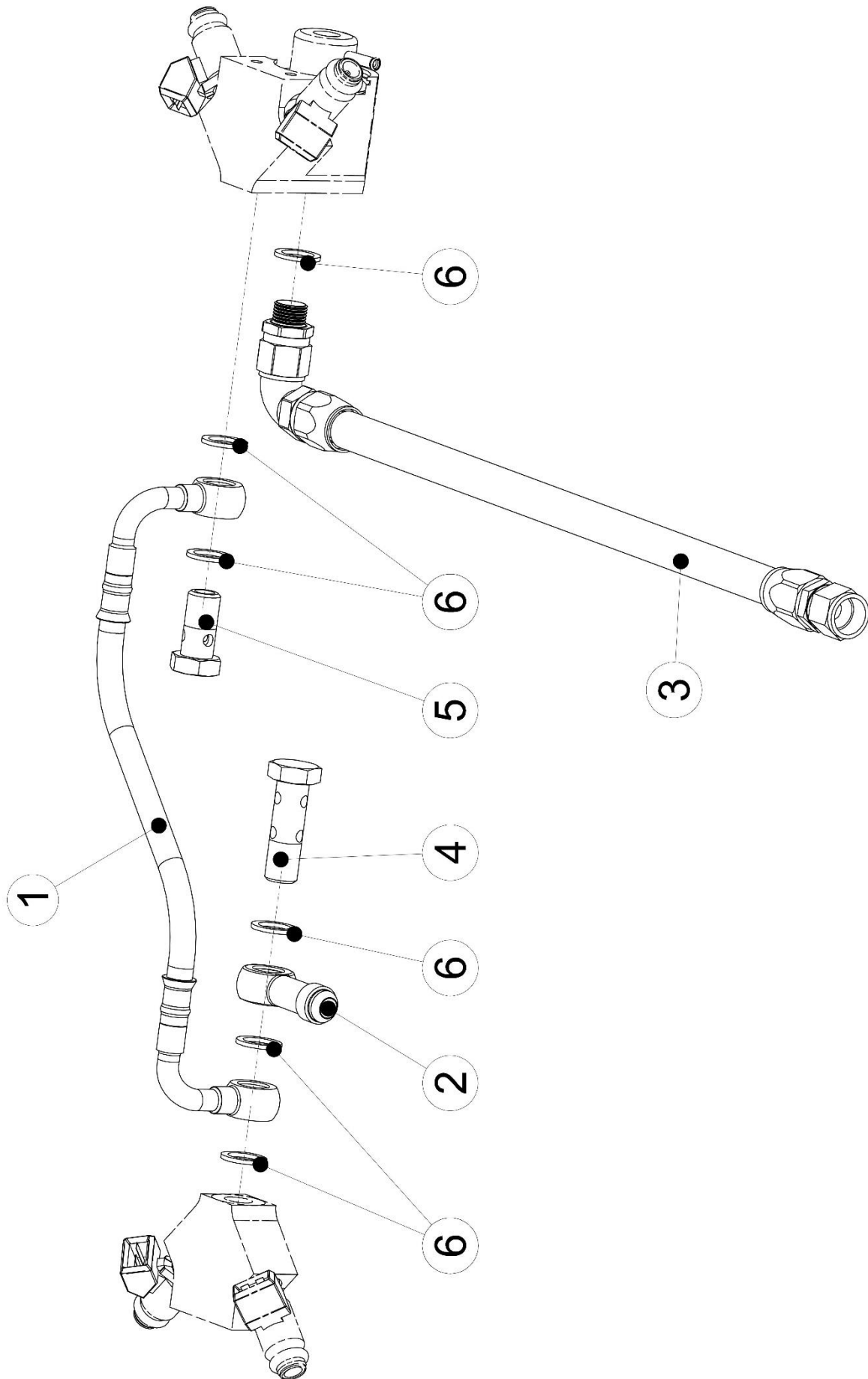
Item	Part No.	Description	Parts in assembly	Note
42	S1035012	O - Ring 35 x 1,2	4	
43	BE061515	Inlet extension tube	4	
44	E012517	Protection hose Fp-regulator	1	
45	F2580002	Hose clamp single use Ø10	2	
46	SE060565	Inlet hose D60-L500	1	
47	SE060560	Inlet tube D60 x 1	1	
48	F2110060	Nordlock washer M6	8	
49	S3101415	Copper sealing ring d10xD14x1.5	1	
50	E081507	Fuel pressure sensor	1	12Nm
51	F4621215	Hexagon Socket Cap Screw Plug - M12x1.5	1	20Nm



Inlet Manifold, Injectors and Throttle (Double ECU)

Item	Part No.	Description	Parts in assembly	Note
1	BE061510	Inlet Collector HPS	1	
2	E061506	Injector Holder	1	
3	SE062501	Injector 330 cc	4	(3)
4	S3121715	Copper Sealing Ring $\varnothing 12 \times 17 \times 1.5$	2	
5	E081504	Air Temperature Sensor	2	20 Nm
6	F2580001	Hose Clamp single use $\varnothing 47$	8	
7	E061511	Rubber Hose 38x3x38	4	
8	E061509	Inlet Tube Right	2	(7)
9	E061505	Injector + Fuel Pressure Regulator + sensor Holder / Bypass (Dual ECU)	1	
10	E061512	Injector Holder Lock Plate	2	
11	F1005016	Hex Head Screw - M5x16 - 8.8 Steel - Yellow Passivated	4	6 Nm
12	E064501	Fuel Pressure Regulator - 3bar	1	(3)
13	F1600036	Retaining Ring - bore 36mm	1	
14	E061508	Inlet Tube Left	2	
15	F0106016	Socket Cap Screw - M6x16 - 8.8 Steel - Yellow Passivated	8	10 Nm (2)
16	E064503	Fuel Pressure Regulator Hose ($\varnothing 4.5 \times 9.5 \times 16$ cm)	1	
17	S3081210	Copper Sealing Ring $\varnothing 8 \times 12 \times 1$	2	
18	F2510708	Banjo Eye M8/ $\varnothing 5$	1	
19	F2520800	Banjo Bolt M8x1	1	6 Nm
20	SUSE060521	Throttle assy dia45 (Contains piece 20 - 33)	2	
21	F3604010	Flanged Button Head Socket Cap Screw - M4x10 - Zinc Plated	2	
22	E081519	Double TPS Hall	1	
23	SE060530	Throttle shaft D45 Hall Sensor	1	
24	F0104008	Socket Cap Screw - M4x8 - 8.8 Steel - Yellow Passivated	2	2Nm
25	E060506	Throttle Lever Stop	2	
26	B2200001	Flanged Bushing 8x10x5.5	1	
27	E060511	Throttle lever spring	2	
28	F3504008	Button head socket cap screw - M4x8 - 10.9 Steel - Zinc Plated	1	
28	E060543	Throttle lever out plate hall sensor	2	3 Nm
28	E060544	Lever middle plate hall Sensor	1	
28	E060545	Lever inner plate hall sensor	1	
29	SE060525	Throttle Plate D45	1	
30	E060542	throttle bushing hall sensor	1	
31	SE061513	Locking plate throttle shaft	1	
32	F5001060	Hex nut M6 -Zn	1	
33	SE060535	Throttle connection	1	
34	SE060520	Throttle Housing D45 Hall Sensor	1	(7)
35	F1803006	Parallel Pin 3x6	2	
36	F0105035	Socket Cap Screw - M5x35 - 8.8 Steel - Yellow Passivated	4	6 Nm
37	SE062003	Air Filter D60 straight	1	
38	S1036020	O - Ring Viton 36 x 2	4	
39	F2580005	Hose clamp single use $\varnothing 63,5$	3	
40	E012510	Baffle right	1	
41	E012509	Baffle left	1	

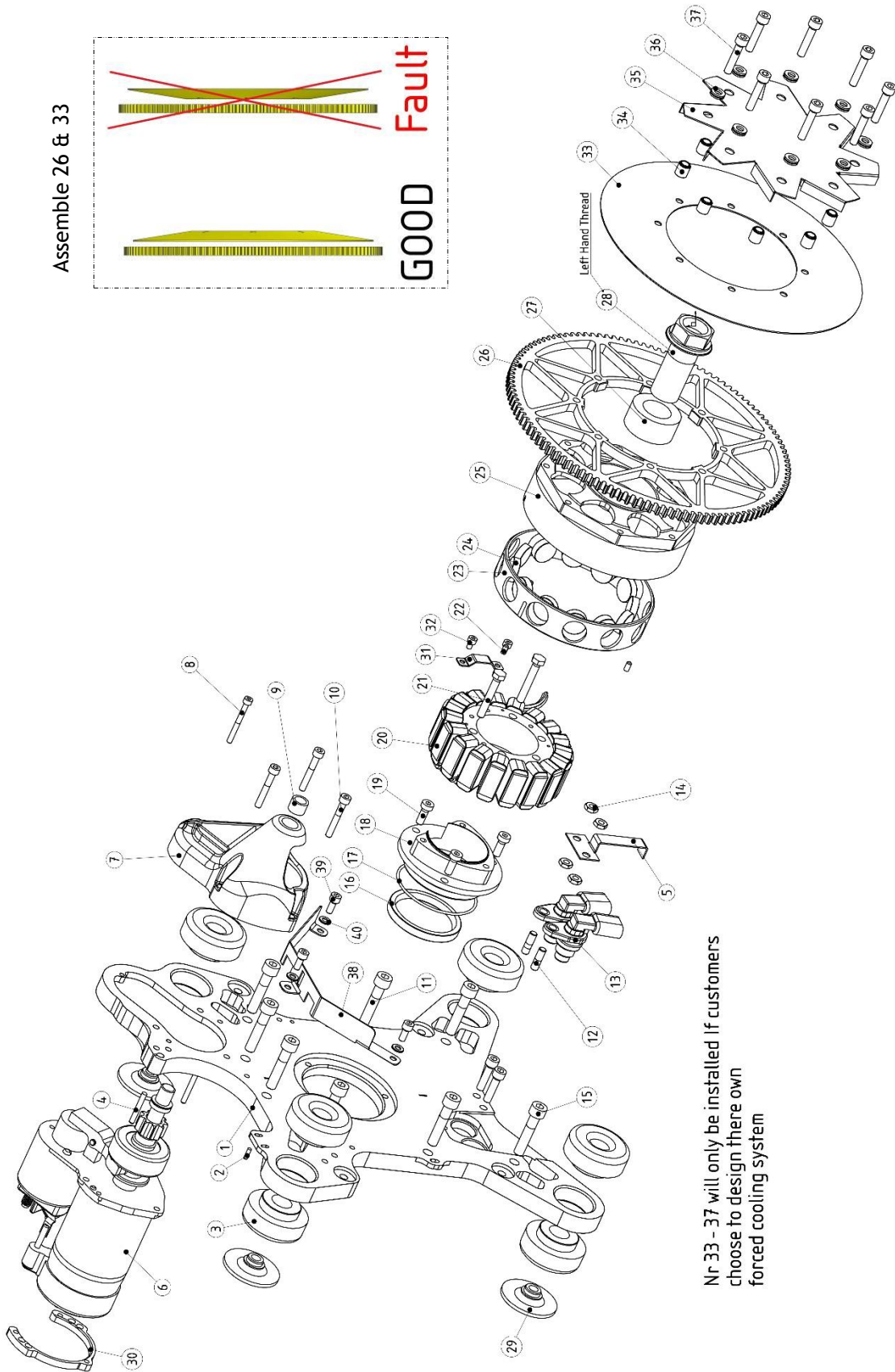
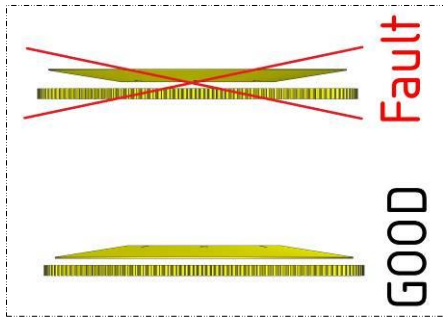
Item	Part No.	Description	Parts in assembly	Note
42	S1035012	O - Ring 35 x 1,2	4	
43	BE61515	Inlet extension tube	4	
44	E012517	Protection hose Fp-regulator	1	
45	F2580002	Hose clamp single use Ø10	2	
46	SE060565	Inlet hose D60-L500	1	
47	SE060560	Inlet tube D60 x 1	1	
48	F2110060	Nordlock washer M6	8	
49	S3101415	Copper sealing ring d10xD14x1.5	2	
50	E081507	Fuel pressure sensor	2	12 Nm



Fuel lines

Item	Part No.	Description	Parts in assembly	Note
1	E063012	Fuel line cross short	1	
2	F2510312	Banjo Eye M12 / 6JIC	1	
3	E063015	Fuel return line 3.5 - 5.2	1	
4	F2521210	Banjo bolt M12x1.5 Long	1	18 Nm
5	F2521200	Banjo bolt M12x1.5	2	18 Nm
6	S3121715	Copper sealing ring d12xD17x1.5	7	

Assemble 26 & 33

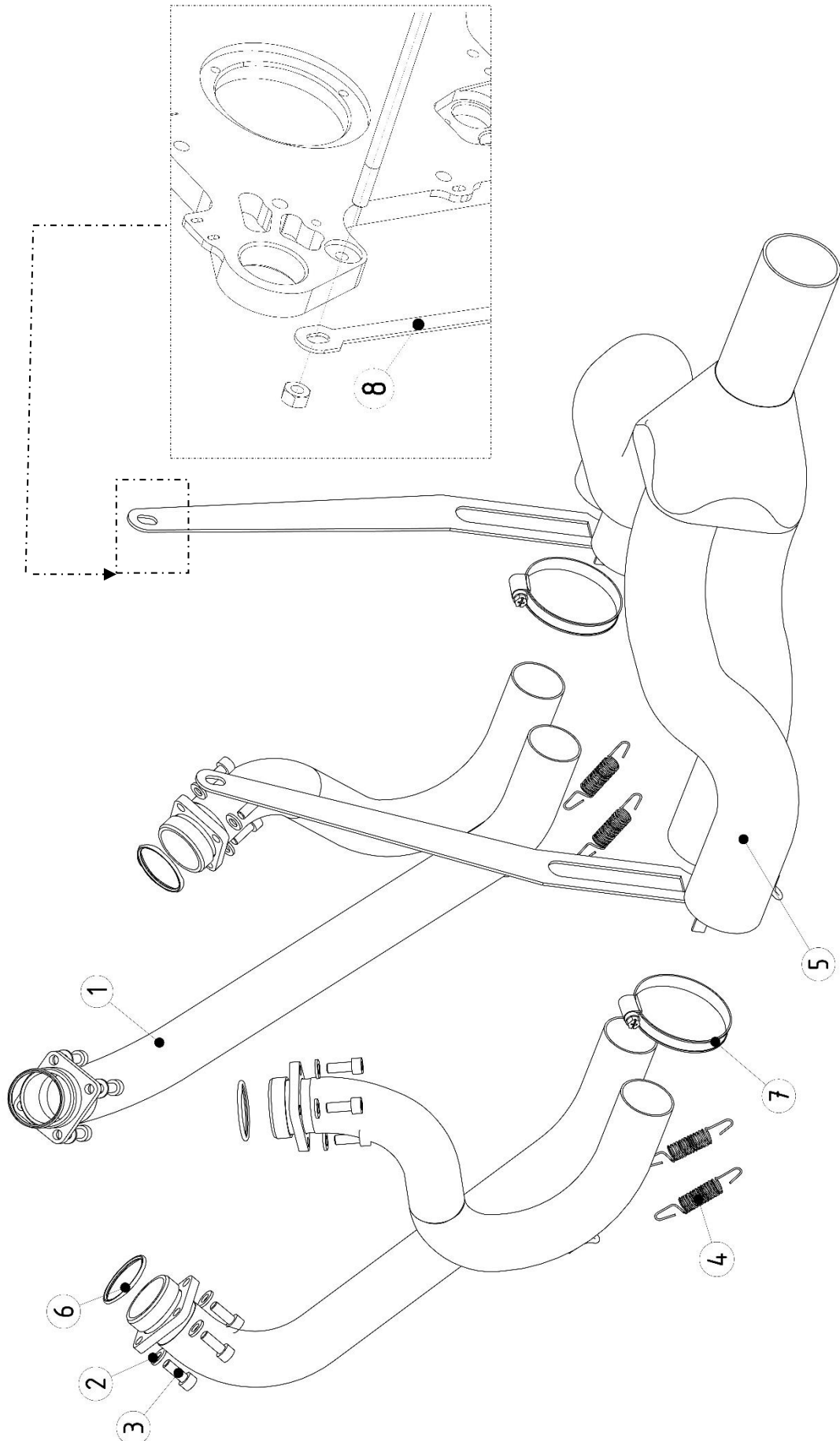


Nr 33 - 37 will only be installed if customers choose to design their own forced cooling system

Engine Mount Plate, Starter and Alternator

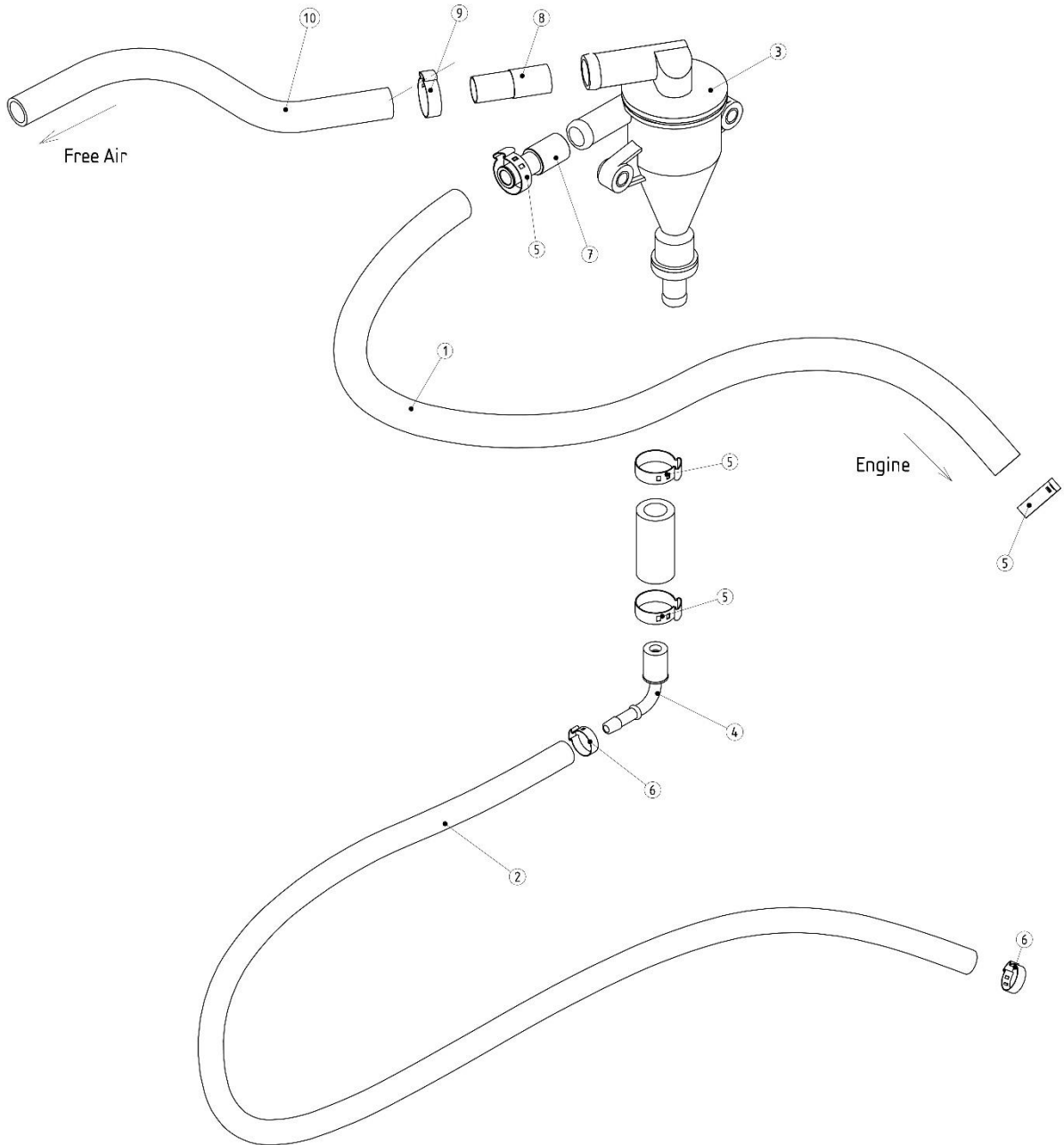
Item	Part No.	Description	Parts in assembly	Note
1	E013506	Engine Mount Plate	1	(7)
2	F1803010	Parallel Pin 3x10	2	
3	E014002	Rubber Engine Mount	8	
4	F1804020	Parallel Pin 4x20	2	
5	E072001	Locking plate hall sensor	1	
6	E050501	Starter Engine	1	
7	E050503	Starter Cap	1	
8	F0104035	Socket Cap Screw - M4x35 - 8.8 Steel - Zinc Plated	1	3 Nm
9	B2100001	Bushing 12x14x10	1	
10	F0105030	Socket Cap Screw - M5x30 - 8.8 Steel - Yellow Passivated	3	6 Nm(2)
11	F0108040	Socket Cap Screw - M8x40 - 8.8 Steel - Yellow Passivated	8	25 Nm
12	F4106020	Stud - M6x20 - Yellow Passivated	2	(2)
13	E081503	Hall Sensor	2	(3)
14	F5103060	Prevailing torque type hexagon nut - M6 - Zinc plated	4	6 Nm
15	F0106025	Socket Cap Screw - M6x25 - 8.8 Steel - Yellow Passivated	2	10 Nm
16	S2506207	Oil Seal Viton 50x62x7 GR	1	
17	S1066020	O-Ring Viton ø66x2	1	
18	E051505	Alternator Stator Spacer	1	(7)
19	F0506016	Socket cap screw thin - M6x16 - 8.8 Steel - Zinc plated	3	10 Nm (7)
20	E052001	Alternator Stator + connector	1	
21	F0706040	Hexagon head screw - M6x40 - 8.8 Steel - Zinc plated	3	10 Nm
22	SUBE052005	Alternator rotor flange assembly HPS (Contains piece 22, 23, 24, 25)	1	(8)
	F4510408	Hexagon Socket Set Screw (Flat Point) - M4	2	
	E051502	Alternator Magnet Spacer Ring	1	
	E052002	Alternator Magnet	12	
	E052510	Alternator Rotor Flange Forced air	1	
26	E051003	Starter Ring Gear Karayel	1	
27	E023012	alternator bolt washer/3.5HPS	1	
28	E023010	Alternator rotor flange bolt long	1	280 Nm (2)
29	E013505	Engine Mount Washer	4	
30	E050504	Starter Fixing Ring	1	
31	E013030	Bracket Alternator Guide	1	
32	F0104006	Socket Cap Screw M4x6 - 8,8 Yellow	2	
33	E052507	Alternator Fan Assembly (Contains Piece 33, 34 35)	1	
	E052503	Alternator Fan Base	1	
	E052504	Spacer Alternator Fan	8	
	E052506	Alternator Fan Top	1	
36	F2110060	Nordlock Washer M6	8	
37	F0206028	Socket Cap Screw - M6x28 - 8.8Steel -Zn	8	10Nm

Item	Part No.	Description	Parts in assembly	Note
38	E013031	Alternator Protection plate	1	
39	F0105012	Socket cap screw M5x12 - 8.8 Steel yellow passivated	3	
40	F2110050	Nordlock Washer M5	3	



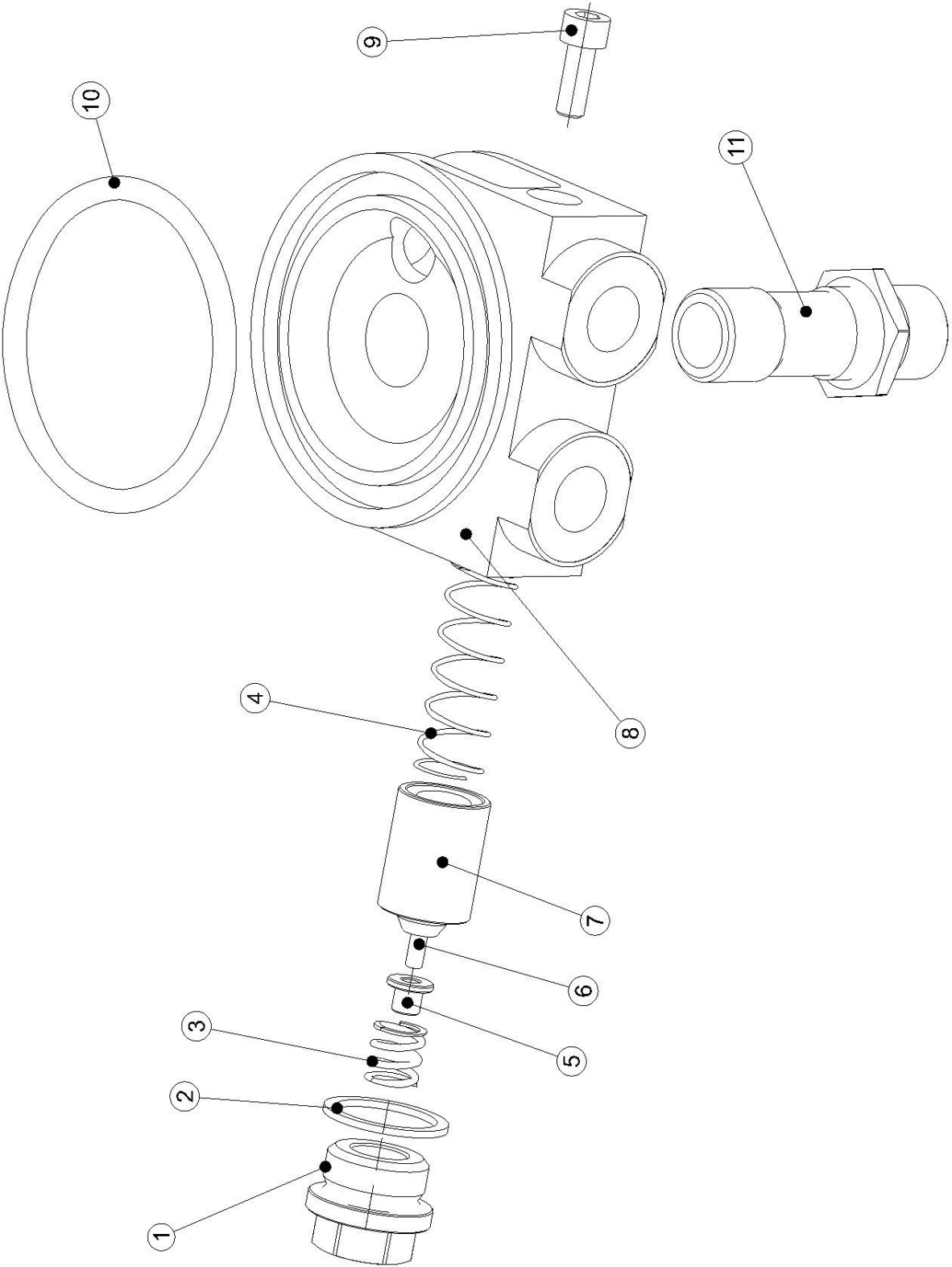
Exhaust System

Item	Part No.	Description	Parts in assembly	Note
1	BE091020	Stainless Steel Exhaust Tubes (set)	1	
2	F2110060	NordLock Washer M6	16	
3	F0106016	Socket Cap Screw - M6x16 - 8.8 Steel - Yellow Passivated	16	10 Nm (1)
4	E093001	Exhaust Spring	4	
5	BE092020	4 in 1 collector 3.5 Ø40 recht	1	
6	E092002	Exhaust gasket ring Inox d32xD38x2.5	4	
7	F2580007	hose clamp ø40-60	2	
8	BE093010	Bracket 3.5iHPS 4in1 collector	2	



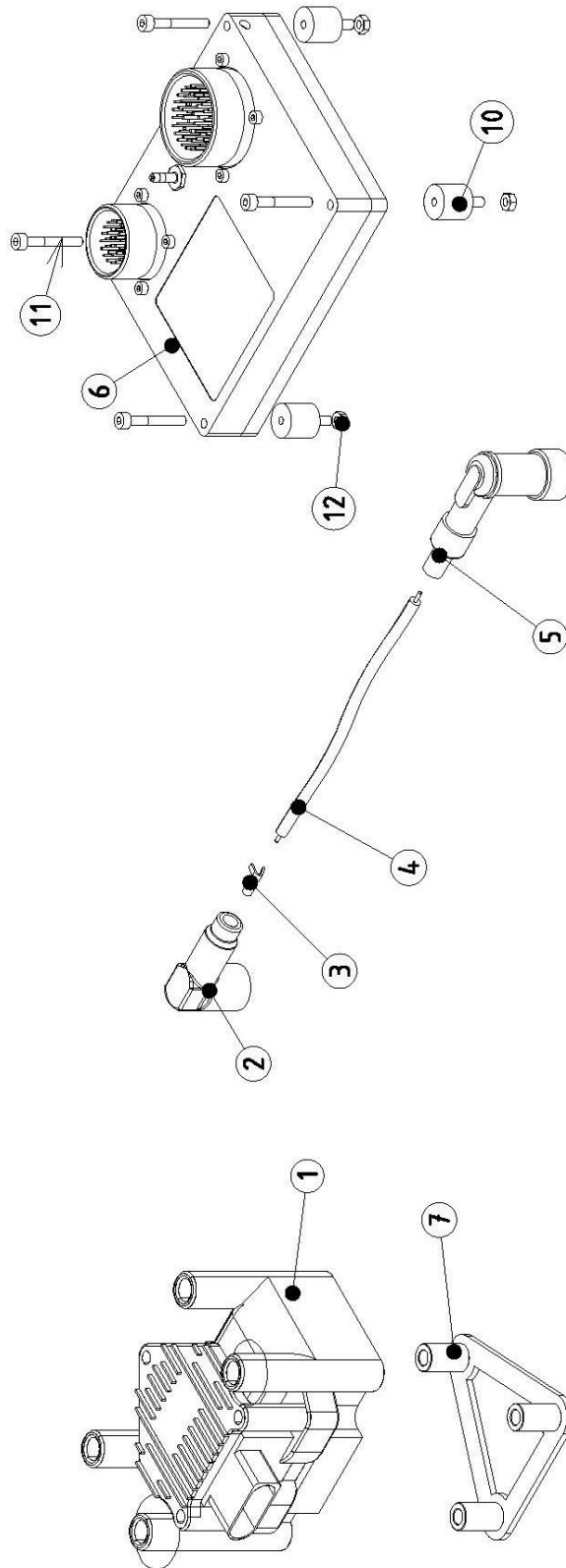
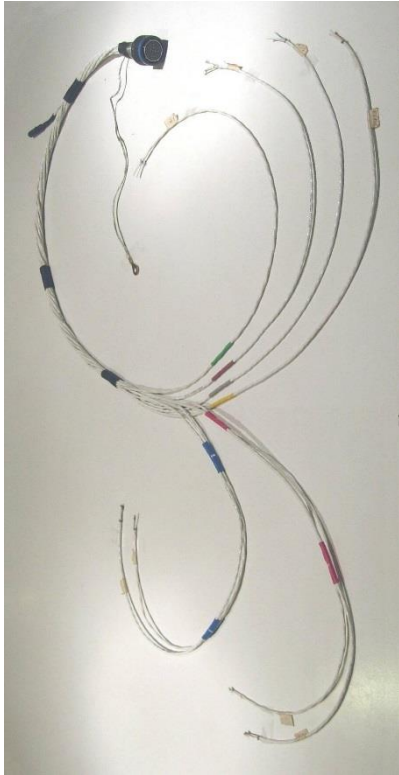
Breather and Oil/Air Separator

Item	Part No.	Description	Parts in assembly	Note
1	F2550009	Cloth Braided Hose $\varnothing 12 \times 17$	1	
2	F2550007	Rubber Hose $\varnothing 6 \times 13.5$ (125 °C)	1	
3	E043500	Oil/Air separator assembly (Contains piece 3,4,5,6,7,8)	1	
4	E043506	Oil/Air Separator (30°)	1	
5	E044003	Elbow connection oil return (assembly)	1	
6	F2580004	Hose clamp $\varnothing 20$	4	
7	F2580003	Hose clamp $\varnothing 14.5$	2	
8	E043508	Reduction oil / air separator $\varnothing 15$	1	
9	E043509	Reduction Oil/Air Separator Outlet	1	
10	F2580010	Hose Clamp $\varnothing 21$	1	
10	F2550010	Cloth Braided Hose $\varnothing 15 \times 20$	1	



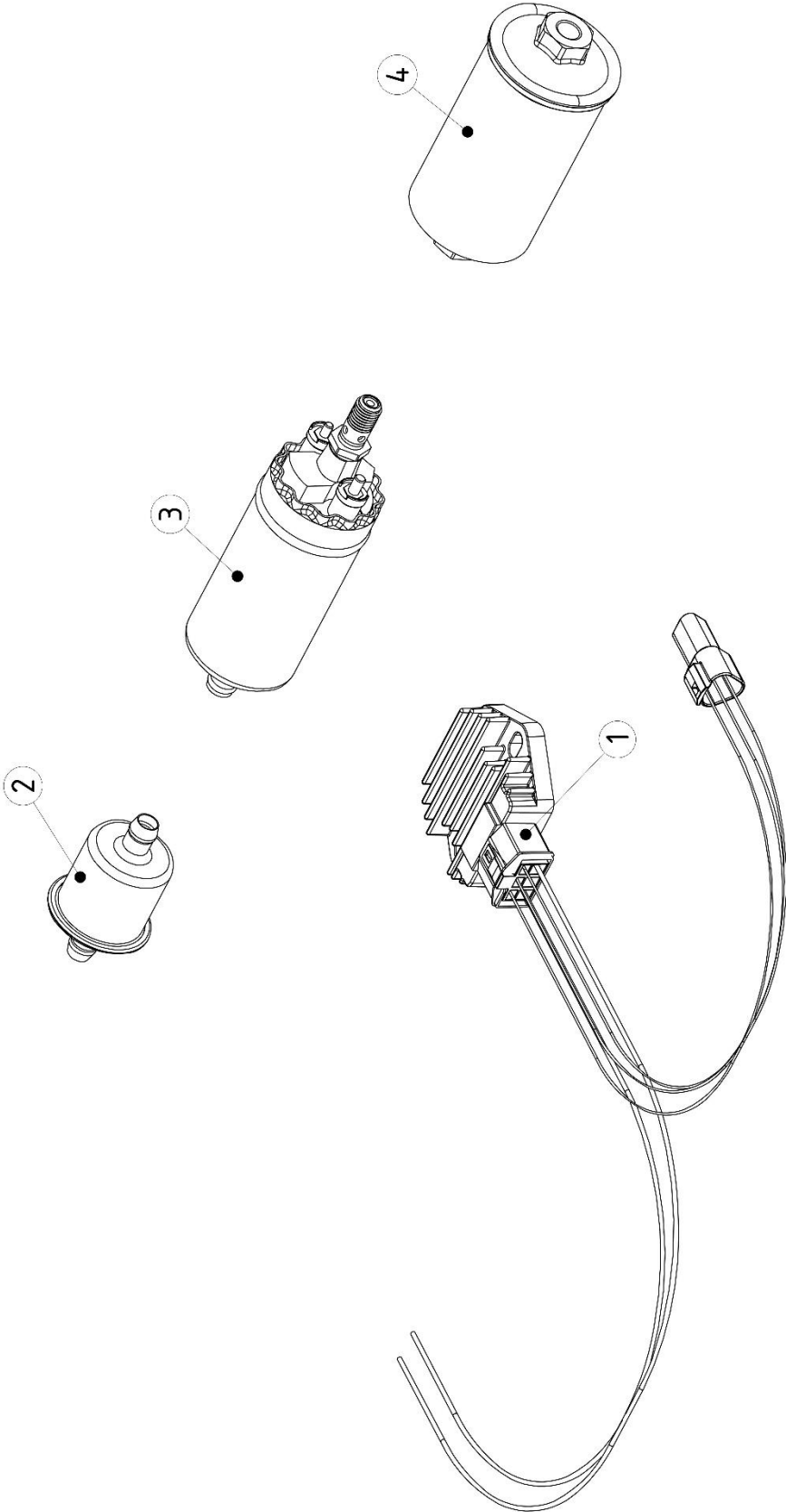
Oil Thermostat : E042515

Item	Part No.	Description	Parts in assembly	Note
1	E42520	Plug M22x1,5	1	20 Nm
2	S3222715	Copper sealing 22x27x1,5	1	(4)
3	F2010010	Spring VDSiCr Ø1,60x8,00x14.50 mm	1	
4	F2010020	Spring VDSiCr Ø1,4x14,00x46,50 mm	1	
5	E042540	Spring Holder	1	
6	E042501	Bimetal	1	
7	E042530	Bimetal Cover	1	
8	SE042510	Thermostat housing	1	
9	F0206025	Socket Cap Screw - M6x25 - 8.8 Steel	1	10 Nm
10	S1062050	O-Ring Viton Ø 62x5	1	
11	E042007	Oil filter adapter screw M20 x 1.5	1	20 Nm



Ignition and Engine Control Unit

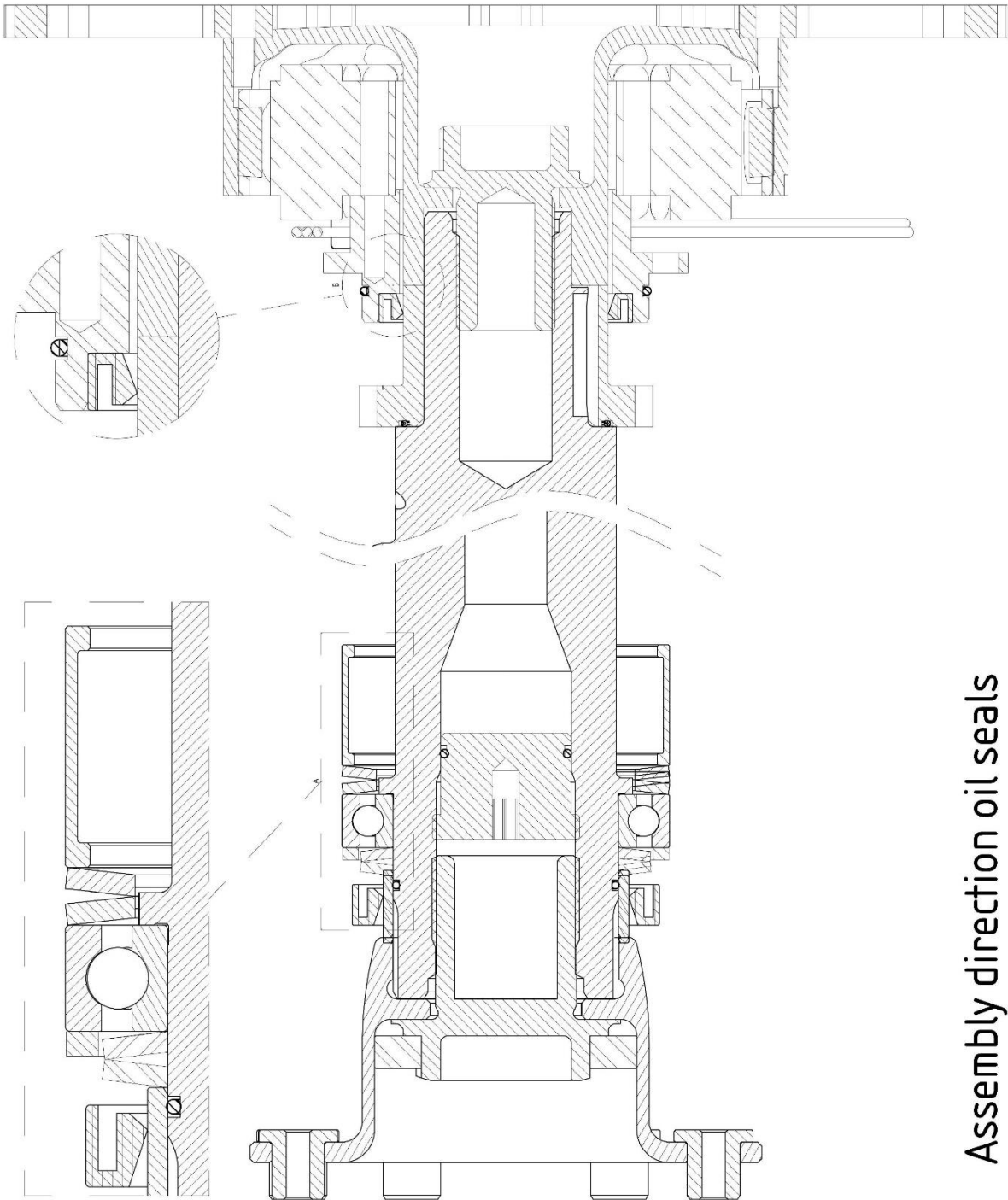
Item	Part No.	Description	Parts in assembly	Note
1	E071001	Ignition Coil	1	
2	E071501	Ignition Coil Cover	1	
3	E071505	Copper Clamp (for Ignition Coil Cover)	1	
4	E071503	Ignition Lead Cable	1	
5	E071504	Spark Plug Cover	1	
6	E080612 E080613 E080617 E080607	Engine Control Unit 3.5i Engine Control Unit 3.5iS Engine Control Unit 3.5iF Engine Control Unit 3.5iHPS	1	
7	E071002	Ignition coil bracket	1	
8	E081006 E081007	ECU Wiring loom engine L = 1000 (Single ECU) ECU Wiring loom engine (Double ECU)	1	
9	SE081007 SE081009	ECU Wiring loom cockpit (4 + 6 cylinder) L =1000 (Single ECU) ECU Wiring loom cockpit (4 + 6 cylinder) L =1000 (Double ECU)	1	
10	F2641515	Silent bloc M4 type B - hoogte 15	4	
11	F0204030	Socket Cap screw M4x30-8,8 Steel Yellow Passivated	4	4Nm
12	F5102040	Prevailing hexagon nut M4	4	4Nm



Accessories

Item	Part No.	Description	Parts in assembly	Note
1	E053005	Regulator + Wires Assembly	1	
2	E064003	Fuel Filter (Pre-filter)	1	
3	E063502	Fuel Pump	1	
4	E064001	Fuel Filter (Fine)	1	

Section of drawings



Assembly direction oil seals

Notes

- (1) Loctite 8009 (High Temperature Resistant Grease)
- (2) Loctite 266 (Thread Locker)
- (3) Engine Oil
- (4) Replace When Removed
- (5) Loctite 5910 (Quick Gasket)
- (6) Loctite 577 (Thread Sealant)
- (7) Elring No. 030.792 (Sealing Silicone)
- (8) Loctite 573 (Flange Sealant)
- (9) Loctite 542

Revision

Revision 1 (2017-10-19)

- Pg 34 - 35 : nr 21: E013025 (Steel Cable)

Revision 2 (2018-06-01)

- Pg 4-5: Nr. 22
- Pg 4-5: Nr. 22
- Pg 6-7: E081507 (oil/Fuel pressure sensor) (hose is deleted) / E081516 was E081501
- Pg 14 -20: Nr 3 E061506 was E061503 / Nr 48 and 49
- Pg 24-25: Deleted 29 - 34
- Pg 29: Nr6: 1 => 2st.
- Pg 33: E081002 => E081006 / E081005 => E081007 / SE081002 => SE081006 / SE081005 => SE081009

Revision 3 (2018-12-01)

- Pg 33: Nr 6: (E080604 => E080612; E080605 => E080613; E080606 => E080617)
- Silicone 030.792 was 030.790

Revision 4 (2019-10-01)

- Pg 14 en 15: Nr 9 E0615013 was E061507
- Pg 18 en 20: Nr 9 E061505 was E061507 / nr 43 & 44: 2 parts
- Pg 24 en 25: Nr 8 F0104035 was F0104045 en Nr10 F0105030 was F0105035
- Pg 34 en 35: Nr 3 E053003 was E053002 (Rectifier / regulator connector and pins)

Revision 5 (2020-02-10)

Pg 6 en 7: Nr 29 - 32 verwijderd: Nylon Cable Tie
Nr 40 - 42 Toegevoegd
Nr 29: S3142015 was S3141815
Nr 32: S3162215 was S3162015

Pg 12 en 13: Nr 16: Detail

Pg 14 en 15: Throttle assy SUE060520 was SUE060510 / E081819 was E081506 / E060546 was E060540

Pg 18 en 19: Throttle assy SUE060520 was SUE060510 / E081819 was E081506 / E060546 was E060540

Pg 24 en 25: Nr 30: E050504 (Starter fixing ring) / (2) bij nr 10

Nr 31 en 32: Bracket Alternator Guide

Pg 30 en 31: Nr 3: F2010010 was F2010002

Nr 4: F2010020 was F2010002

Revision 6 (2020-07-01)

Pg 12 en 13: Nr 14: E024008 was E024005

Pg 28 en 29: Nr 8 (E043509), 9 en 10 toegevoegd

Revision 7 (2021-06-01)

Pg 24 -25 : Nr 14 (F5103060) 8Nm was 10Nm

Pg 34 -35 : Nr 2 was Nr 2 en 3 (Regulator + Wires assembly was Regulator + prewired connector)
E052003 verwijderd (Alternator Stator Connector & Pins)

Pg 36 : Detail bij Section of drawings

Revision 8 (2022 - 04 -01)

Pg 12 en 13: Nr 10: E022511 was E022510

Nr 11: F1706030 was BE021005

Nr 12: BE021001 was E021001

Nr 18 was E020510

Nr 21 F1306012 was F13005016

Nr 22: S1028020 (O-ring viton 28x2) toegevoegd

Oil Stop M24x1,5 verwijderd

Pg 26 en 27: Nr 7: F258007 was F2580011

Revision 9 (2023 - 06 -01)

Pg 4-5 : S1105020 (O-ring Viton 105x2) verwijderd / Nr22 S3101415 toegevoegd

Pg 6-7: Nr 16 S1012020 (O-Ring Viton ø12x2) was S1011020 (O-Ring Viton ø11x2)

Pg 24 en 25: Nr 33 - Nr37 toegevoegd

Pg 24 en 25: Nr. 26: E051003 was E051001

Pg 12 - 13: Behalve nr 8 is alles idem aan 350I/Is

Pg 14 - 20: Nr 3: SE062501 was E062501

Pg 37: Notes toegevoegd

Revision 10 (2024 - 02 -01)

Pg 14- 16: nr 42: S1035012 was S103510 (O-ring 35x1 word O-ring 35x1,2)

Pg 18- 120: nr 42: S1035012 was S103510 (O-ring 35x1 word O-ring 35x1,2)

Pg 24-26: Nr 14: 6Nm was 8Nm

Nr 38 - 40 toegevoegd (Alternator Protection Plate) (2^{de} Pagina gestart => pg in vorige
revisie kan gewijzigd zijn)

Revision 11 (2025-04-30)

Pg 28-29: Nr 7: E092002 was E092001 (Exhaust gasket ring Inox d32xD38x2.5)