



# ***Illustrated Parts Catalogue***

***FORCED  
COOLING***

***FOR **UL**520-ENGINES***

***AERO ENGINE***



Please fill in your engine and aircraft details for further reference:

Engine Serial No. : .....

Aircraft type : .....

Model : .....

Serial No. : .....

Registration : .....

## ***Introduction***

### **Remarks**

The illustrations in this Illustrated Parts Catalogue show the typical construction. They may not represent in full detail or the exact shape of the parts which have the same or similar function.

### **Modifications**

All efforts are made to ensure the accuracy of this Illustrated Parts Catalogue at the time of publication. ULPower, however, maintains a policy of continuous improvement of its products without imposing upon itself any obligation to install them on its products previously manufactured.

ULPower reserves the right at any time to discontinue or change specifications, designs, features, models or equipment without incurring obligation.

### **Engine serial number**

On all enquiries or spare parts orders, always indicate the engine serial number, as the manufacturer makes modifications to the engine for further development.

The engine serial number is located at the front left side of the crankcase (above oil filter).

### **Structure**

Each section of this Illustrated Parts Catalogue starts with an exploded view or assembly drawing on the left side. The corresponding heading and the listing of the parts is on the right side and the following pages.

For each assembly drawing the right number of parts is listed in the relevant column. Because an engine can contain multiple times the illustrated assembly or a part can be used in several different applications, the total number of parts per engine is also given.

Generally all fasteners are tightened with a torque wrench. The "Notes" column indicates the appropriate torque or refers to extra information at the end of the section.

Blank



# Table of Contents

Introduction .....1

    Remarks.....1

    Modifications.....1

    Engine serial number .....1

    Structure .....1

Table of Contents .....3

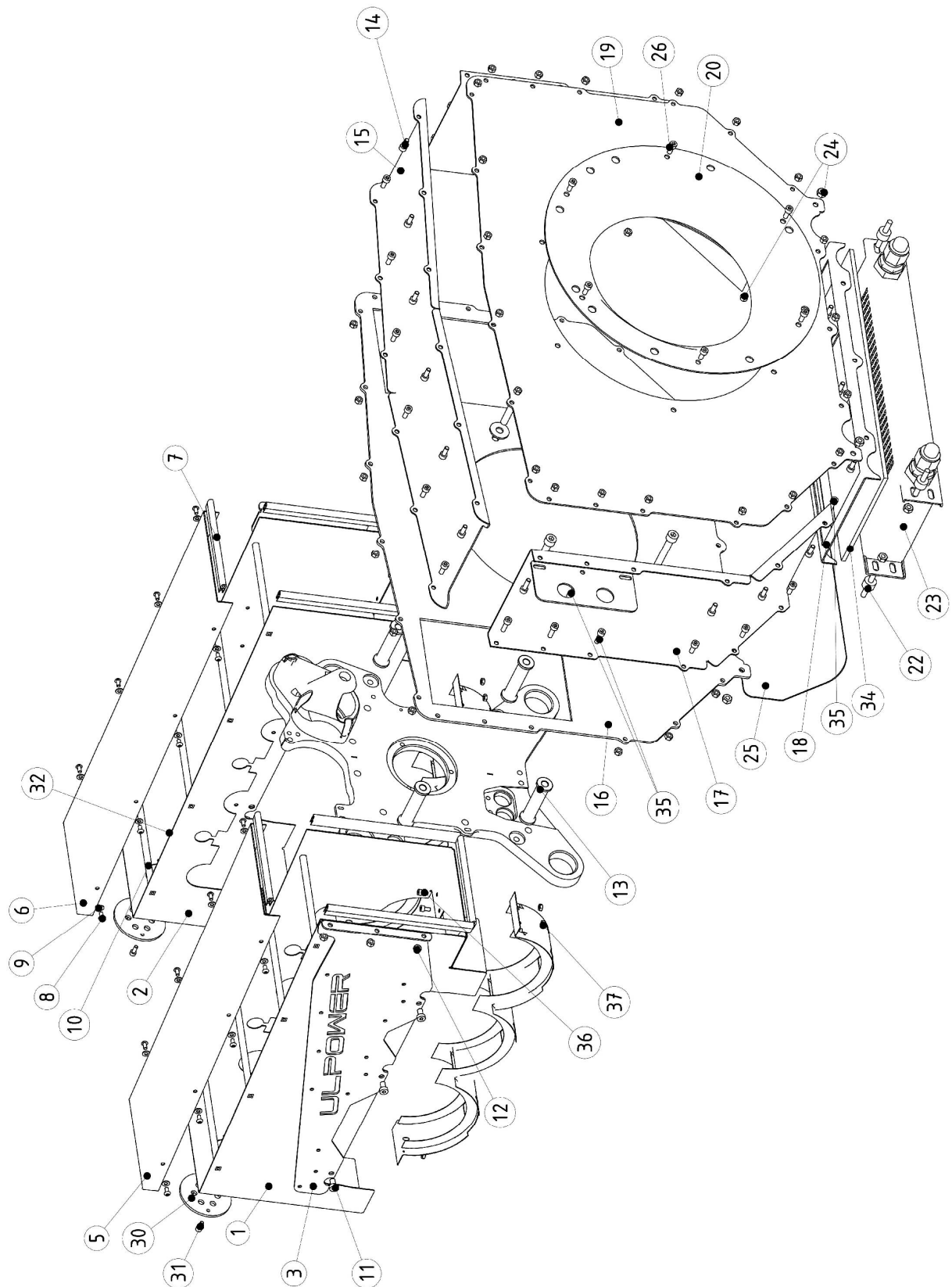
Airbox forced .....6

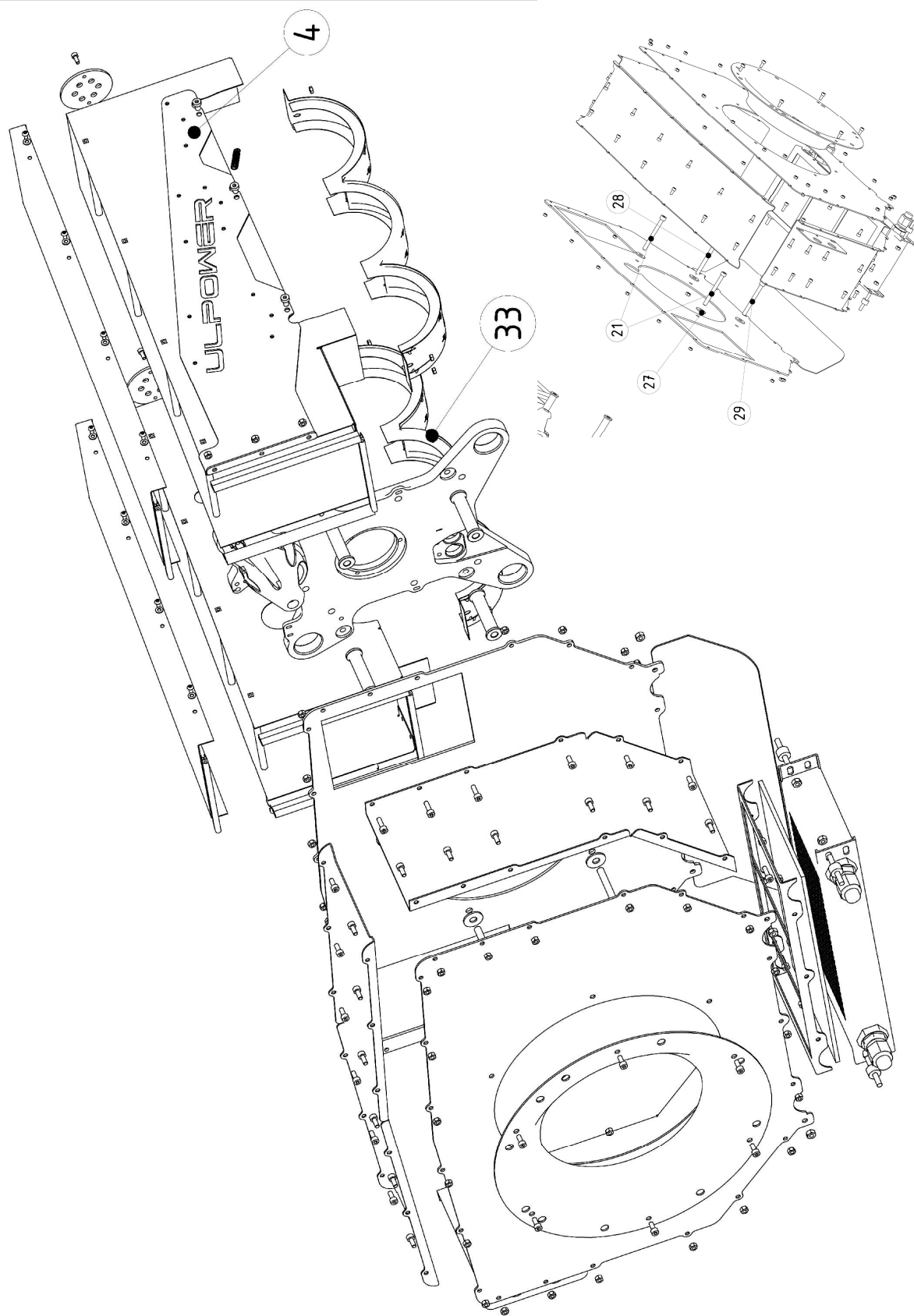
Rotor .....9

Oil Cooler Lines ..... 11

Front Engine Mount Plate ..... 13

Revision ..... 14

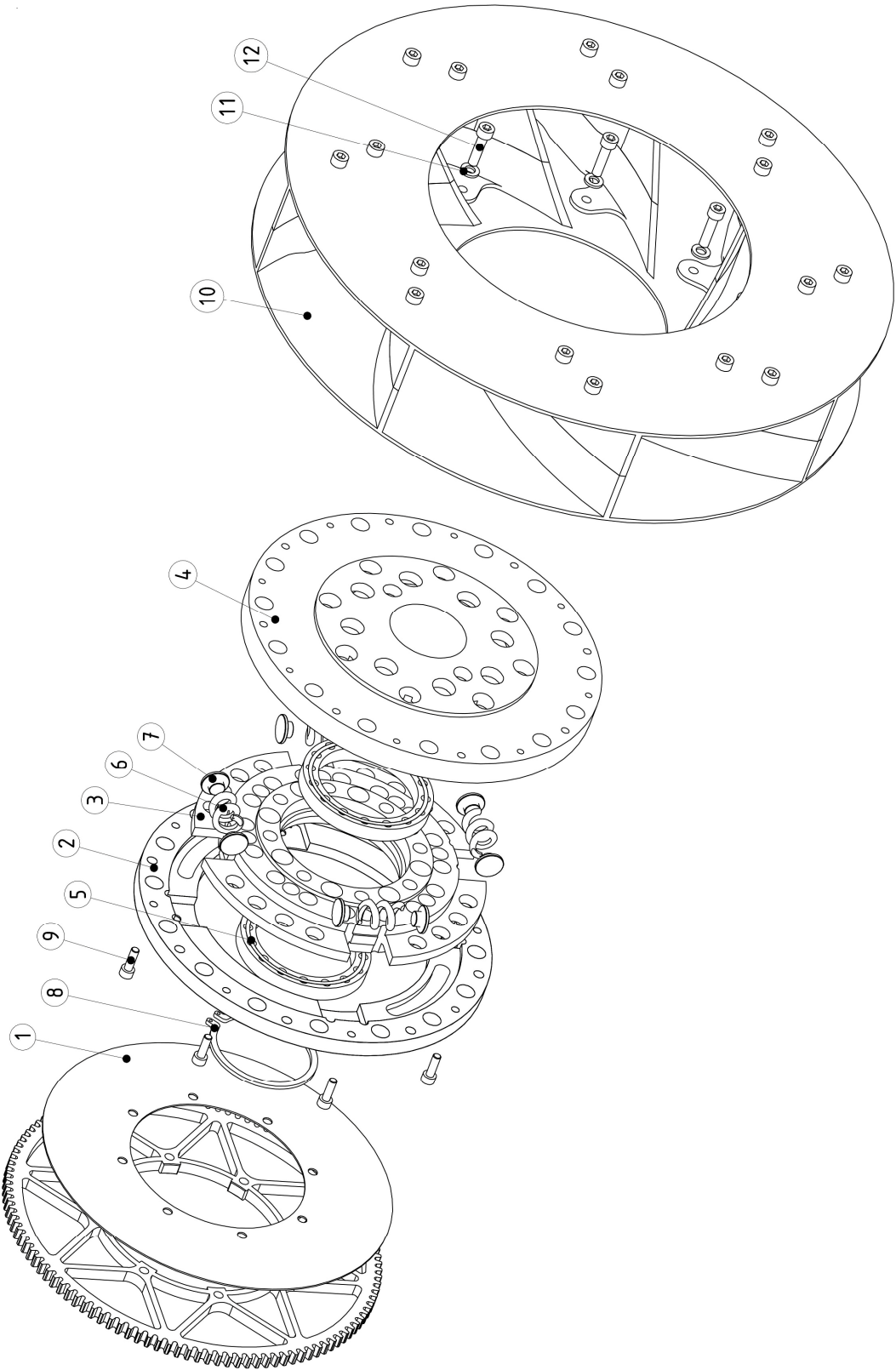




## Airbox forced

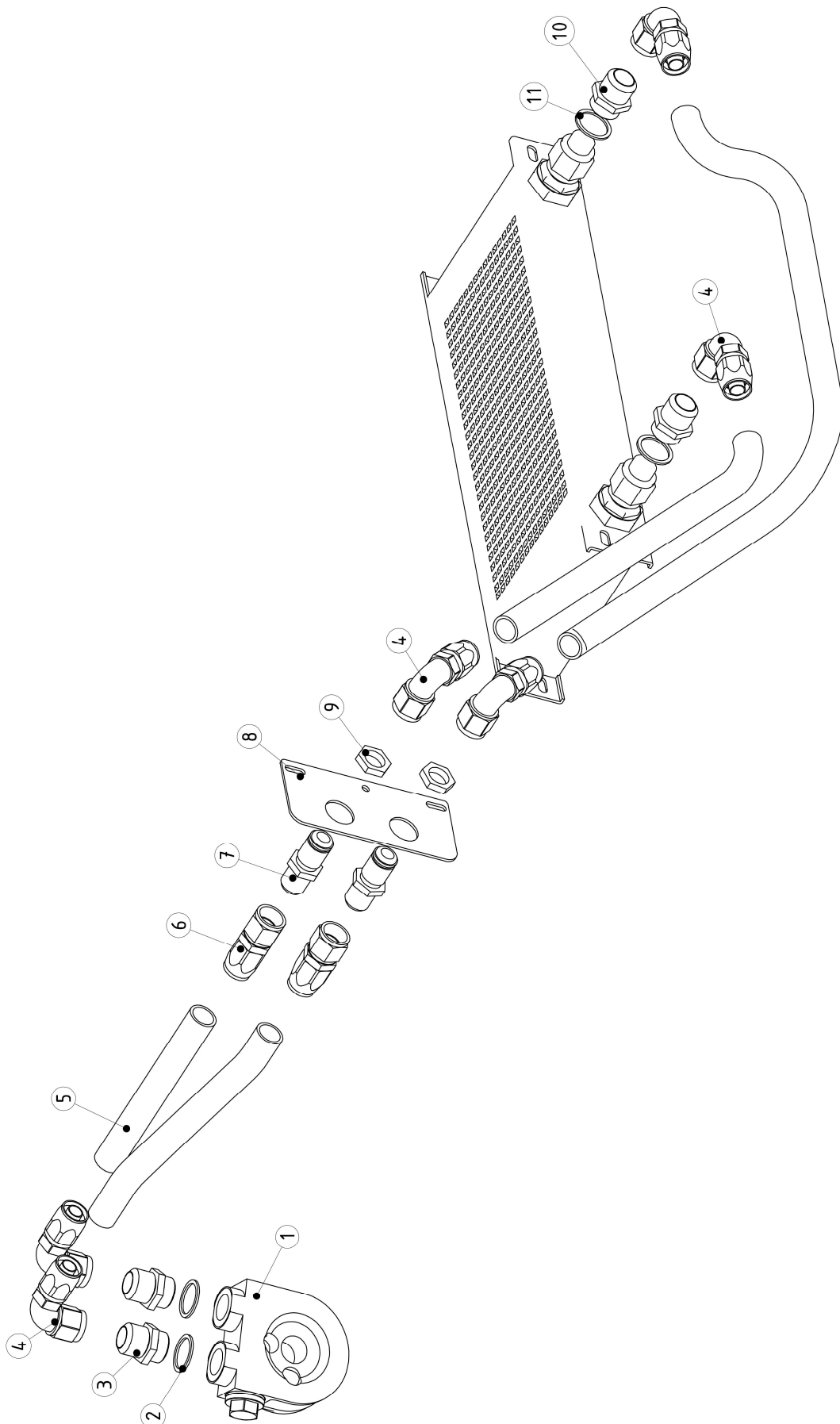
Item	Part No.	Description	Parts in assembly	Note
1	SBE012501	Cylinder head ram airbox right forced	1	
2	SBE012500	Cylinder head ram airbox left forced	1	
3	SBE012503	Bracket connection to airbox right	1	
4	SBE012502	Bracket connection to airbox left	1	
5	SBE012505	Cover ram airbox right	1	
6	SBE012504	Cover ram airbox left	1	
7	S8150701	Seal strip 15.1x7,3	1,2m	
8	F0904008	Hex socket button cap screw M4x8 10.9Zn	16	4Nm
9	F2210040	Disc spring -M4- types ELVZ (36397.040.001)	16	
10	SE012506	stud for airbox forced Ø8 l=140.2	8	
11	F0206010	Socket cap screw M6x10 - 8.8Zn	6	
12	F5103050	Prevailing hex-nut all metal M5	42	10Nm
13	SE130145	Engine mount spacer	4	
14	F0205012	Socket cap screw M5x12 - 8.8 Zn	30	
15	SBE130140	Cover airbox forced	1	
16	SBE130120	Main plate forced	1	
17	SBE130160	Side plate airbox forced	2	
18	SE130150	Oil cooler bracket forced	1	
19	SBE130130	Back plate airbox forced	1	
20	BE130135	Inlet cone forced cooling	1	
21	F0208100	Socket cap screw M8x100 - 8.8 Zn	2	20Nm
22	F2662010	Silent bloc M6 type A hoogte 10	4	
23	SE0426318	Oil cooler -19 Rows - Forced Cooling	1	
24	F5103060	Prevailing hex-nut all metal M6	14	
25	BE130125	Protection Plate Oil Cooler forced Cooling	1	
26	F0206012	Socket cap screw M6x12 - 8.8 Zn	6	
27	F2110080	Nordlock Washer M8	4	
28	E130145	Special Bolt M8x85 + M4 -10 diep	1	20Nm
29	F0208090	Socket Cap Screw M8x90 - 8.8 Zn	1	20Nm
30	SE011504	Ignition cable grommet (6cyl)	2	
31	F0204010	Cap screw M4x10 - 8.8Zn	4	
32	F5102040	Prevailing Hex nut M4	4	
33	F0904012	Hex socket button cap screw M4x12 10.9Zn	1	
34	SE130151	Protection Air Cooler (6cyl)	1	
35	F0205016	Socket cap screw M5x16 - 8.8 Zn	12	
36	F0204008	Socket cap screw M4x8 - 8.8Zn	8	
37	F5102040	Prevailing hex nut M4	4	





# Rotor

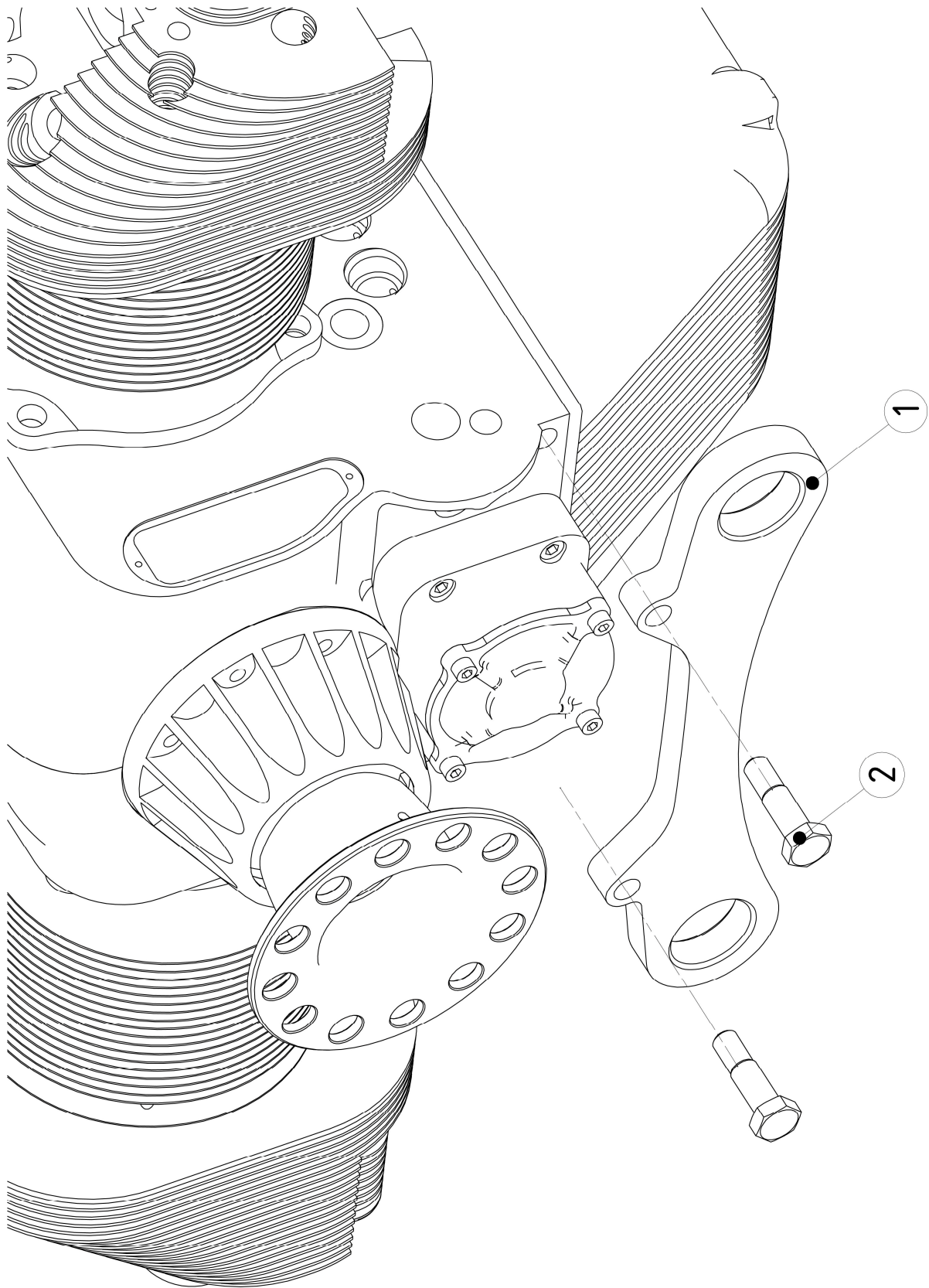
Item	Part No.	Description	Parts in assembly	Note
1	E052514	Alternator fan base IHPS	1	
2	<i>SUSE130001</i>	<i>Subass "Flexible Coupling"</i>		
3	SE130105	Flexible Coupling Outer Ring Cover	1	
4	SE130100	Flexible Coupling Outer Ring	1	
5	SE130110	Flexible Coupling Inner Ring	1	
6	E132001	Bearing Ø65x85x10 Sealed	2	
7	SE130106	Spring	4	
8	SE130112	Push Finger Spring	8	
9	F1500062	Retaining Shaft	1	
9	F0305016	Socket Cap Screw M6x25 -12.9	8	
10	SUSBE130510	Right Fan 5,2	1	
	SUSBE130610	Left Fan 5,2		
11	F2110060	Nordlock Washer M6	8	
12	F0306025	Socket Cap Screw M6x25 -12.9	8	15Nm





## Oil Cooler Lines

Item	Part No.	Description	Parts in assembly	Note
1	E042515	Oil Thermostat	1	
2	S3202615	Copper Sealing Ø20x26x1,5	2	2
3	F2560014	Adapter M20x1,5 - 10JIC	2	
4	F3010090	90° Reusable - 10JIC/Swivel	6	
5	F2550011	Reusable Hose 10JIC	4m	
6	F3010000	Reusable Straight - 10JIC	2	
7	F2560017	Bulkhead Adapter - 10JIC	2	
8	E130161	Oil Line Support	1	
9	F2560018	Bulkhead Locknut - 10JIC	2	
10	F2560016	Adapter M22x1,5 / 10JIC	2	
11	S3222715	Copper Ring Ø22x27x1,5	2	



## Front Engine Mount Plate

Item	Part No.	Description	Parts in assembly	Note
1	E013520	Front Engine Mount Plate	1	
2	F1410040	Hexagon Fit Bolt M10x40	2	25Nm

# Revision

## Revision 1 (2017-12-21)

**Pg 4 en 5:** New look + New covers (nr.5 and nr.6) + nr.10 (stud for airbox forced 6 cyl)

## Revision 2 (2019-11-19)

**Pg 4 - 6:** Nr 12: 9 pieces was 6

Nr 15: 33 pieces was 31

..Nr 31, 32, 33 added

Nr 34 added

## Revision 3 (2020-12-01)

**Pg 8 en 9:** SUSE130001 (Subass Flexible Coupling)

Nr 1: E052514 was E052 503