

ULPOWER AERO ENGINES N.V.

Zonnebeekseweg 379
B-8900 Ieper
Belgium

Tel. +32 57 46 61 20
Fax +32 57 44 52 21
e-mail: info@ulpower.com

SERVICE INSTRUCTION

Service Instruction No. 2020-02

Inspection of Hall Sensors for possible oil weep.

Engines serial numbers: All serial numbers up to 203901

SUBJECT: Oil weep from Hall sensors – inspection

Field reports have shown that a very few of our valued customers have experienced a small oil weep from the Hall sensors on the alternator side of the engine. Extensive investigation showed us that, in rare circumstances, the O-ring on the sensor may not have seated as expected due to factors outside of our control (tolerance related). We have taken appropriate production and supply actions to resolve this, implemented immediately.

Consequently, we advise all operators to inspect these Hall sensors for oil weep at next service or within 25 flying hours.

NOTE: There is no need to replace the O-ring if there is no oil weep at the hall sensor.

However, should you notice an oil weep at a hall sensor, please replace the current O-ring with part number S1018116 O-ring to resolve the leak. Inspect again after engine run and first flight.

The new O-ring can be purchased through Wicks if you are in the USA or through your ULPower dealer.



SB 2020-02							
Issued			Revised			Page	Revision
Mo	Day	Year	Mo	Day	Year	1 of 5	0
30	09	2020					

REPLACEMENT PROCEDURE FOR AFFECTED ENGINES

Replacing the O-rings of the hall sensors

Parts needed : S1018116 O-ring Viton 18.1x1.6 (2 for single ECUs and 4 for dual ECU)

Tools needed: wrench 10 mm
 Suitable flat head screw driver
 sealing silicone (e.g- Dirko Elring 030792 or similar)

Illustrated Parts Catalogue references :

Engine	Page IPC
ULXXXi/iF/iHPS/iF	24
ULXXXiSA	28

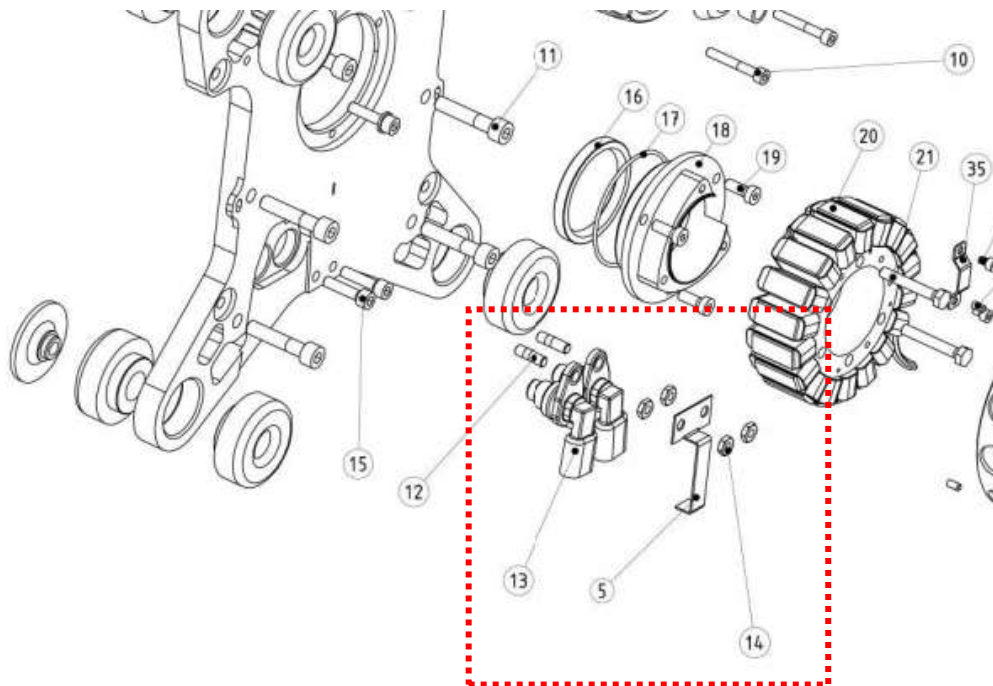


Figure 1 : IPC UL260i detail page 24

Prior to maintenance or service work, make sure to comply with the stated safety instructions.

Ensure the following at each maintenance event:

- All electrical systems "OFF" (Key switch off/Master off)
- Disconnect battery
- Secure engine against unintentional operation.

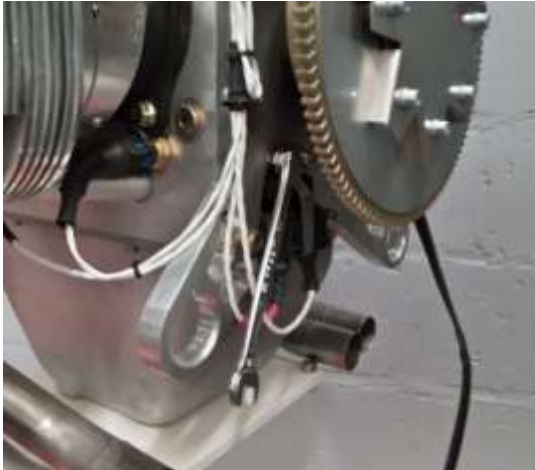


SB 2020-02							
Issued			Revised			Page	Revision
Mo	Day	Year	Mo	Day	Year	2 of 5	0
30	09	2020					

Guideline :

On tail dragger aircraft, consider levelling the aircraft before commencing work to avoid oil spills.

- 1) Unscrew the 2 hexagon M6 nuts (IPC item 14) and remove the locking plate hall sensor (IPC item 5)



- 2) Disconnect the 2 hall sensor connectors.
To do so, push the connector up, then push down the clips (use flat head screw driver).
You are now able to remove the connector



- 3) Unscrew the 2 hexagon M6 nuts (IPC item 14) which hold the hall sensors.
Gently pull the sensor out of the backplate



When removing the sensor, oil may leak out from the crankcase. Keep the sensor mounting holes clean and make sure that no dust/dirt can enter the crankcase.

- 4) Carefully remove the existing O-ring and install the new one (O-ring Viton S1018116)



- 5) Add some sealing silicone on the O-rings before mounting



- 6) Clean the sensor mounting hole in the backplate and glide in the sensor.
- 7) Install the 2 hexagon M6 nuts (IPC item 14) and torque to 10Nm.
- 8) Push in both connectors (ensure correct orientation of each sensor).



If you have a Single ECU



If you have dual Ecu

When reconnecting, make sure to connect them into the correct sensor!!!
 RED heat shrink = outboard
 BLACK heat shrink = inboard

- 9) Mount the locking plate (IPC item 5) and lock with 2 hexagon M6 nuts (IPC item 14). Torque the 2 nuts to 10Nm.
- 10) In case of dual ECU, repeat these steps for the 2 other hall sensors (if necessary)

After first start of the engine, check for any oil leaks, and again after first flight.